

(Copyright, 1923, by The Hartford Courant Company)

HARTFORD, CONNECTICUT: SUNDAY, SEPTEMBER 30, 1923.

(Copyright, 1923, by The Hartford Courant Company)

Manchester to Observe 100th Anniversary

TOWN, ORIGINALLY PART OF HARTFORD, HAS HAD DISTINCTIVE HISTORY

Separate Government Finally Obtained in 1823--Place Grew From Little Parish of Orford--Territory First Settled 265 Years Ago.

COMMUNITY'S ACHIEVEMENTS REFLECTED IN ITS GROWTH

MANCHESTER, as a town, has turned the corner of the first hundred years and about the 265th anniversary of its settlement. Originally part of Hartford...

It is little known that Manchester is a town in its own right. It was first settled in 1758 by a group of men who were looking for a place to settle...

When the parish was established the first church was built in 1760. It was a simple wooden building with a steeple...

Manchester has a rich history of industry and commerce. It was one of the first towns in the state to have a textile mill...

CENTENNIAL COMMITTEE WHICH ARRANGED MANCHESTER ANNIVERSARY CELEBRATION



MANCHESTER CENTENNIAL WORKERS. Front row, left to right--Elizabeth M. Bennett, Harriet Condon, Mrs. Clara Randall, Miss Anna Ward, Miss Lella M. Church, Mrs. Emma Lyons Nettleton, Mrs. George Bond, Mrs. A. L. Crowell. Second row--Robert Reid, John Spillane, Morris Hill, Edward F. Taylor, Robert V. West, William Kniffin, Clifford D. Cheney, Joseph P. Lamb, U. J. Lupien, Samuel Massey, Fred H. Huxford, George Kibbey, Arthur E. Powers, George H. Howe, William Taylor. Third row--Mathias Speis, Russell Hathaway, A. F. Howe, Philip Cheney, George T. Top, Wells Strickland, Frank D'Amico, Lawrence W. Case, Walter Olson. Fourth row--Thomas J. Quish, Fred T. Blish, Earl O. Seaman, Edward Belsinger, F. A. Verplanck, Charles McCann, Horace B. Cheney, C. Elmore Watkins, William Robertson.

EFFORT TO CREATE SEPARATE SOCIETY STRONGLY OPPOSED

Petitioners Sought Three Times to Make Town a Distinct Body. Objective Finally Achieved in 1772.

History of Town from Five Miles East to Parish of Orford Period. The territory embracing Manchester was within the grant to the East of Hartford...

Manchester was one of the first towns in the state to have a textile mill. It was founded in 1758 by a group of men who were looking for a place to settle...

Manchester has a rich history of industry and commerce. It was one of the first towns in the state to have a textile mill...

Manchester has 27 namesakes. There are twenty-eight other towns in the world named Manchester. In population, Manchester, Connecticut, ranks third with 29,000...

THREE-DAY CELEBRATION OF TOWN'S CENTENNIAL TAKES PLACE THIS WEEK

Eventful Days, Long Awaited, Include Great Parades, Pageants, Midway, Fireworks, Concerts, Athletics and Historical Exhibits.

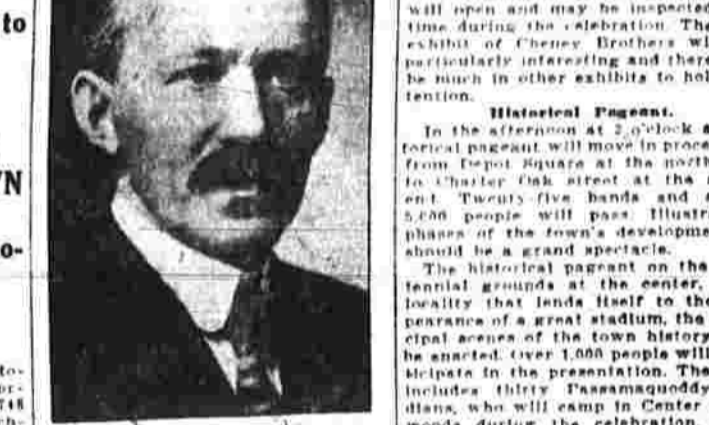
INDIANS IN NATIVE COSTUME TO TAKE PART IN PROGRAM

MANCHESTER'S centennial celebration on Friday, Saturday and Sunday, October 6, 7, and 8, will be one of the most stupendous and spectacular celebrations held in Connecticut in many years.

Events To Interest All. To mark the 100th anniversary of the incorporation of the town and the 265th year of the settlement here, a lavish expenditure has been authorized in the hope of attracting former residents to the home town.

Depicts Progress. The celebration has been carefully planned to interest everyone and graphically present the progress of the town's development.

HEADS CENTENNIAL COMMITTEE OF TOWN



FRANK CHENEY, JR., Chairman Centennial Committee.

SCHOOL DISTRICTS CREATED IN 1751

First Building, Hop Brook, Built in Five Miles. In Same Year Orford Parish Then Directed Education.

Public Money Provided According to List and Length of Term. The first school building in Manchester was built in 1751...

Manchester has a rich history of industry and commerce. It was one of the first towns in the state to have a textile mill...

HAR LARGEST PART IN CELEBRATION



FRANK H. ANDERSON, Chairman Executive Committee.

AMONG LEADERS IN MAKING OF PAPER

Connecticut Ranked Fourth in Production According to 1840 Census. Industry Flourished in Manchester Town.

Present Output of Mill of Case Brothers Totals 12 Tons a Day. Connecticut long held a high rank as a leading paper manufacturing state...

Manchester has a rich history of industry and commerce. It was one of the first towns in the state to have a textile mill...

Manchesters, Once Part of Hartford, Made Long Fight for Independence

Residents in 1726 Started Effort to Form Separate Town Government But Struggle Went On For Years--Some Interesting Sideights.

As early as 1726 it was the wish of the settlers to have a separate town government. The struggle for independence was long and hard...

Manchester was one of the first towns in the state to have a textile mill. It was founded in 1758 by a group of men who were looking for a place to settle...

Manchester has a rich history of industry and commerce. It was one of the first towns in the state to have a textile mill...

Manchester has 27 namesakes. There are twenty-eight other towns in the world named Manchester. In population, Manchester, Connecticut, ranks third with 29,000...

RELIGIOUS HISTORY OF MANCHESTER HAD ITS START IN 1748

Authorization Then Given to Have Preaching Part of Year. Congregationalists Came First to Town.

Methodists, Baptists, Episcopalians and Catholics Then Followed. The first religious services in Manchester were held in 1748...

Manchester has a rich history of industry and commerce. It was one of the first towns in the state to have a textile mill...

Manchester has a rich history of industry and commerce. It was one of the first towns in the state to have a textile mill...

Manchester has 27 namesakes. There are twenty-eight other towns in the world named Manchester. In population, Manchester, Connecticut, ranks third with 29,000...

# Manchester's Religious History Dates Back to 1748

## RELIGIOUS HISTORY STARTED IN 1748

(Continued from Page 1)

month preceding the meeting, and ending December, was voted in 1748 for the purpose of erecting a meeting house for the purpose of holding religious services. The church organization was perfected July 23, 1748. It was in the year when the result was the most significant of the town's history.

Rev. Benjamin Phelps was the first pastor, having been called October 22, 1749, at a salary of \$100 per annum. He was pastor for thirteen months, 1749 to 1750, during the trying times of the Revolution. He was succeeded by Rev. John H. Woodford, who was called in 1750. The excitement there existing at the time made it necessary for him to choose between leaving the country or taking the oath of allegiance to the king. The latter he refused to do, and he was expelled from the town. He was succeeded by Rev. John H. Woodford, who was called in 1750. The excitement there existing at the time made it necessary for him to choose between leaving the country or taking the oath of allegiance to the king. The latter he refused to do, and he was expelled from the town.

## Manchester Churches of Early Days and Present Modern Structures



1 and 2—Original St. Mary's Episcopal Church and proposed structure to cost \$100,000; 3 and 4—St. Bridget's Church many years ago and today; 5 and 6—Old and proposed new North St. Methodist Church; 7—The present North St. Methodist Church; 8—Episcopal Church; 9—Roman Catholic Church; 10—North Church of the Nazarene; 11 and 12—Present and former German Congregational Church; 13—German Congregational Church; 14—North Methodist Church; 15—German Congregational Church.

Methodism in Manchester dates back to 1748, when the first Methodist church was organized. The church was organized by Rev. John H. Woodford, who was called in 1750. The church was organized by Rev. John H. Woodford, who was called in 1750. The church was organized by Rev. John H. Woodford, who was called in 1750.

The first Methodist church was organized by Rev. John H. Woodford, who was called in 1750. The church was organized by Rev. John H. Woodford, who was called in 1750. The church was organized by Rev. John H. Woodford, who was called in 1750.

The first Methodist church was organized by Rev. John H. Woodford, who was called in 1750. The church was organized by Rev. John H. Woodford, who was called in 1750. The church was organized by Rev. John H. Woodford, who was called in 1750.

1 and 2—Original St. Mary's Episcopal Church and proposed structure to cost \$100,000; 3 and 4—St. Bridget's Church many years ago and today; 5 and 6—Old and proposed new North St. Methodist Church; 7—The present North St. Methodist Church; 8—Episcopal Church; 9—Roman Catholic Church; 10—North Church of the Nazarene; 11 and 12—Present and former German Congregational Church; 13—German Congregational Church; 14—North Methodist Church; 15—German Congregational Church.

Swedish Lutheran Church of Today And Its Predecessor 50 Years Ago

The Swedish Lutheran church in Manchester has a long and interesting history. It was first organized in 1872, when a group of Swedish immigrants from the West Coast of Sweden arrived in the town. The church was organized by Rev. John H. Woodford, who was called in 1750. The church was organized by Rev. John H. Woodford, who was called in 1750.

The Swedish Lutheran church in Manchester has a long and interesting history. It was first organized in 1872, when a group of Swedish immigrants from the West Coast of Sweden arrived in the town. The church was organized by Rev. John H. Woodford, who was called in 1750. The church was organized by Rev. John H. Woodford, who was called in 1750.

Internal difficulties existed in the church for some time. The church was organized by Rev. John H. Woodford, who was called in 1750. The church was organized by Rev. John H. Woodford, who was called in 1750. The church was organized by Rev. John H. Woodford, who was called in 1750.

The church was organized by Rev. John H. Woodford, who was called in 1750. The church was organized by Rev. John H. Woodford, who was called in 1750. The church was organized by Rev. John H. Woodford, who was called in 1750.

The church was organized by Rev. John H. Woodford, who was called in 1750. The church was organized by Rev. John H. Woodford, who was called in 1750. The church was organized by Rev. John H. Woodford, who was called in 1750.

Internal difficulties existed in the church for some time. The church was organized by Rev. John H. Woodford, who was called in 1750. The church was organized by Rev. John H. Woodford, who was called in 1750. The church was organized by Rev. John H. Woodford, who was called in 1750.

The church was organized by Rev. John H. Woodford, who was called in 1750. The church was organized by Rev. John H. Woodford, who was called in 1750. The church was organized by Rev. John H. Woodford, who was called in 1750.

The church was organized by Rev. John H. Woodford, who was called in 1750. The church was organized by Rev. John H. Woodford, who was called in 1750. The church was organized by Rev. John H. Woodford, who was called in 1750.

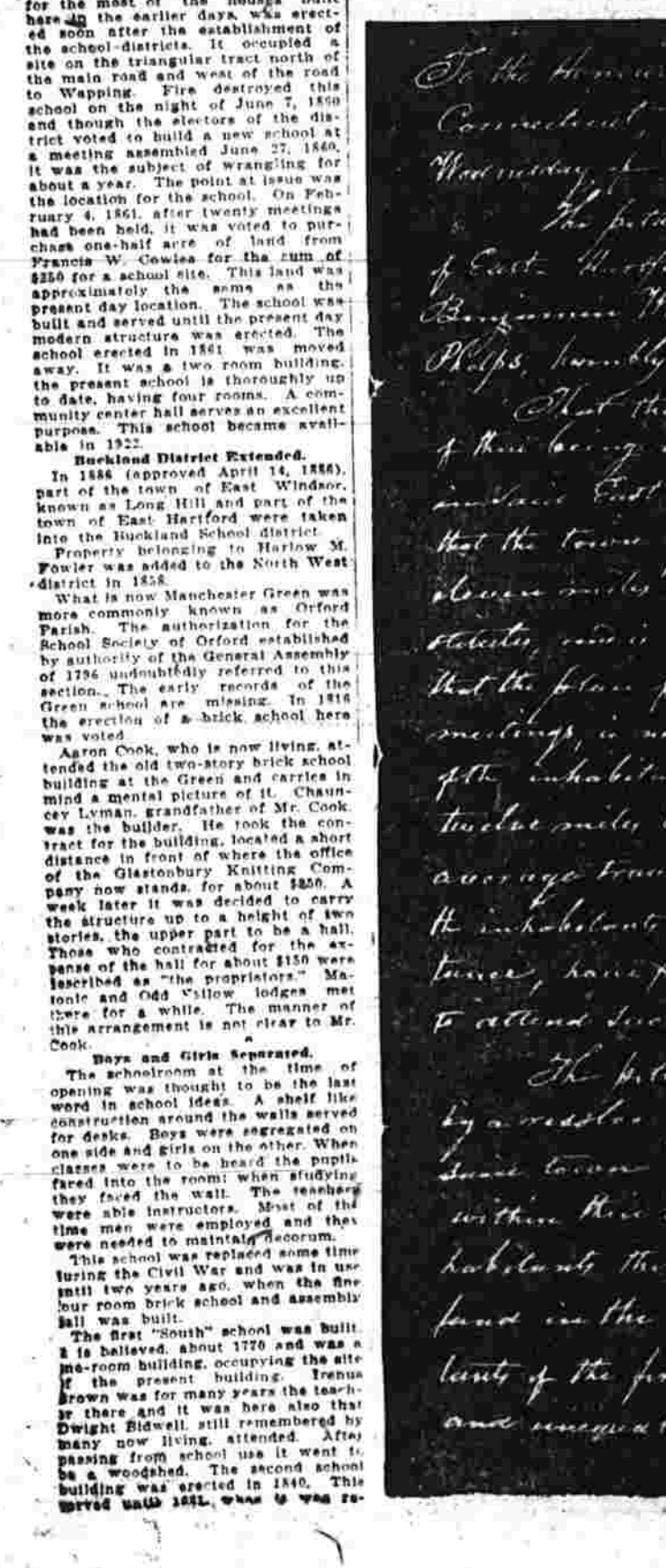
## SCHOOL DISTRICTS CREATED IN 1751

The public school system of Manchester was established in 1751. The school was organized by Rev. John H. Woodford, who was called in 1750. The school was organized by Rev. John H. Woodford, who was called in 1750. The school was organized by Rev. John H. Woodford, who was called in 1750.

The school was organized by Rev. John H. Woodford, who was called in 1750. The school was organized by Rev. John H. Woodford, who was called in 1750. The school was organized by Rev. John H. Woodford, who was called in 1750.

The school was organized by Rev. John H. Woodford, who was called in 1750. The school was organized by Rev. John H. Woodford, who was called in 1750. The school was organized by Rev. John H. Woodford, who was called in 1750.

## GROUP OF MANCHESTER'S UP-TO-DATE SCHOOLS



Left to right, in order, from top—Buckland, Manchester Green, Bump, Porter, Barwood and Recreation Group, West Side, Recreation Group and Nathan Hale.

## MANCHESTER'S EDUCATIONAL SYSTEM IS SECOND TO NONE

Manchester's educational system is second to none. The town has a long and rich history of education, and its modern schools are a testament to its commitment to learning. The schools are well-equipped and staffed with highly qualified teachers. The town's educational system is a source of pride for its residents.

Manchester's educational system is second to none. The town has a long and rich history of education, and its modern schools are a testament to its commitment to learning. The schools are well-equipped and staffed with highly qualified teachers. The town's educational system is a source of pride for its residents.

Manchester's educational system is second to none. The town has a long and rich history of education, and its modern schools are a testament to its commitment to learning. The schools are well-equipped and staffed with highly qualified teachers. The town's educational system is a source of pride for its residents.

## Facsimile of Legislative Act Which Incorporated Town of Manchester in 1823

AN ACT TO INCORPORATE THE TOWN OF MANCHESTER, IN THE COUNTY OF HARTFORD, IN THE STATE OF CONNECTICUT.

Enacted at the City of Hartford, this 15th day of March, 1823.

Be it enacted by the Senate and House of Representatives of the State of Connecticut, in session assembled, That the town of Manchester, in the county of Hartford, in the state of Connecticut, be and the same is hereby incorporated as a town, and the same shall have all the powers and authorities of a town, as if it had been so incorporated by the laws of this state.

## HIGHLAND PARK HAS MINIATURE YOSEMITE



The building part of the town—Highland Park, for the purpose of which the town was incorporated in 1823. It was built by W. A. Willard and is now owned by the town.

Highland Park has a miniature Yosemite. The park is a beautiful area with a large, ornate building and a well-kept lawn. The building is a masterpiece of architecture, and the park is a source of pride for its residents.

Highland Park has a miniature Yosemite. The park is a beautiful area with a large, ornate building and a well-kept lawn. The building is a masterpiece of architecture, and the park is a source of pride for its residents.

Highland Park has a miniature Yosemite. The park is a beautiful area with a large, ornate building and a well-kept lawn. The building is a masterpiece of architecture, and the park is a source of pride for its residents.

## AMONG LEADERS IN MAKING OF PAPER

Among the leaders in the making of paper in Manchester are several prominent figures. These individuals have played a significant role in the development of the paper industry in the town. Their contributions have been instrumental in the growth and success of the industry.

Among the leaders in the making of paper in Manchester are several prominent figures. These individuals have played a significant role in the development of the paper industry in the town. Their contributions have been instrumental in the growth and success of the industry.

Among the leaders in the making of paper in Manchester are several prominent figures. These individuals have played a significant role in the development of the paper industry in the town. Their contributions have been instrumental in the growth and success of the industry.

## CAPTAIN CHENEY ROSE FROM RANKS

Captain Philip Cheney, who served in the military, has been promoted to the rank of Captain. He is a highly respected and experienced officer, and his promotion is a well-deserved recognition of his service and leadership.

Captain Philip Cheney, who served in the military, has been promoted to the rank of Captain. He is a highly respected and experienced officer, and his promotion is a well-deserved recognition of his service and leadership.

Captain Philip Cheney, who served in the military, has been promoted to the rank of Captain. He is a highly respected and experienced officer, and his promotion is a well-deserved recognition of his service and leadership.

# Manchester Home of World-Known Cheney Silk Mills

## INDUSTRY WHICH HAS MADE PLACE FAMOUS HAS NOVEL HISTORY

### Chinese Myths Date Culture of Silk Back to 2640 B. C.—How Cheney Plant Was Started Many Years Ago

Chinese myths date the culture of silk back to 2640 B. C. and its nature was understood before the first emperor to whom the Chinese ascribe the beginning of their ancient customs. It is said that the first emperor, who possibly means an improvement in the silk, instructed his Emperor, Shihung-Chu, to experiment with the silk worms which lived on the mulberry tree, to see if they could be improved.

In the almost pre-historic of the Chinese, the silk worm and the mulberry tree were raised in the mountains of the north of China. It was not until the time of the first emperor, who possibly means an improvement in the silk, instructed his Emperor, Shihung-Chu, to experiment with the silk worms which lived on the mulberry tree, to see if they could be improved.

In the almost pre-historic of the Chinese, the silk worm and the mulberry tree were raised in the mountains of the north of China. It was not until the time of the first emperor, who possibly means an improvement in the silk, instructed his Emperor, Shihung-Chu, to experiment with the silk worms which lived on the mulberry tree, to see if they could be improved.

In the almost pre-historic of the Chinese, the silk worm and the mulberry tree were raised in the mountains of the north of China. It was not until the time of the first emperor, who possibly means an improvement in the silk, instructed his Emperor, Shihung-Chu, to experiment with the silk worms which lived on the mulberry tree, to see if they could be improved.

In the almost pre-historic of the Chinese, the silk worm and the mulberry tree were raised in the mountains of the north of China. It was not until the time of the first emperor, who possibly means an improvement in the silk, instructed his Emperor, Shihung-Chu, to experiment with the silk worms which lived on the mulberry tree, to see if they could be improved.

In the almost pre-historic of the Chinese, the silk worm and the mulberry tree were raised in the mountains of the north of China. It was not until the time of the first emperor, who possibly means an improvement in the silk, instructed his Emperor, Shihung-Chu, to experiment with the silk worms which lived on the mulberry tree, to see if they could be improved.

In the almost pre-historic of the Chinese, the silk worm and the mulberry tree were raised in the mountains of the north of China. It was not until the time of the first emperor, who possibly means an improvement in the silk, instructed his Emperor, Shihung-Chu, to experiment with the silk worms which lived on the mulberry tree, to see if they could be improved.

In the almost pre-historic of the Chinese, the silk worm and the mulberry tree were raised in the mountains of the north of China. It was not until the time of the first emperor, who possibly means an improvement in the silk, instructed his Emperor, Shihung-Chu, to experiment with the silk worms which lived on the mulberry tree, to see if they could be improved.

In the almost pre-historic of the Chinese, the silk worm and the mulberry tree were raised in the mountains of the north of China. It was not until the time of the first emperor, who possibly means an improvement in the silk, instructed his Emperor, Shihung-Chu, to experiment with the silk worms which lived on the mulberry tree, to see if they could be improved.

In the almost pre-historic of the Chinese, the silk worm and the mulberry tree were raised in the mountains of the north of China. It was not until the time of the first emperor, who possibly means an improvement in the silk, instructed his Emperor, Shihung-Chu, to experiment with the silk worms which lived on the mulberry tree, to see if they could be improved.

In the almost pre-historic of the Chinese, the silk worm and the mulberry tree were raised in the mountains of the north of China. It was not until the time of the first emperor, who possibly means an improvement in the silk, instructed his Emperor, Shihung-Chu, to experiment with the silk worms which lived on the mulberry tree, to see if they could be improved.

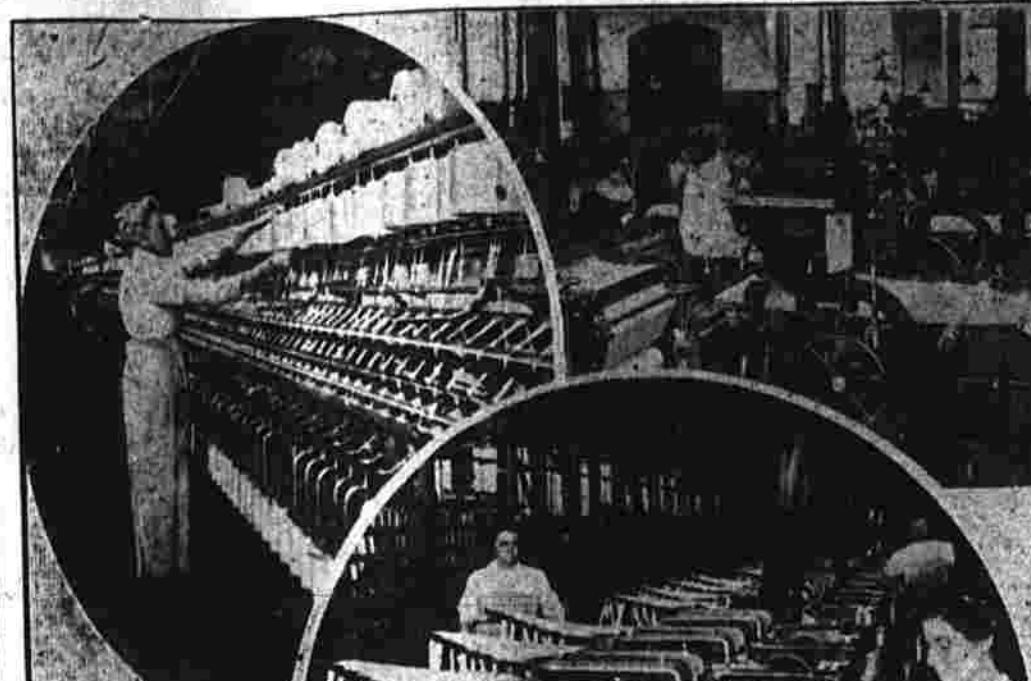
In the almost pre-historic of the Chinese, the silk worm and the mulberry tree were raised in the mountains of the north of China. It was not until the time of the first emperor, who possibly means an improvement in the silk, instructed his Emperor, Shihung-Chu, to experiment with the silk worms which lived on the mulberry tree, to see if they could be improved.

In the almost pre-historic of the Chinese, the silk worm and the mulberry tree were raised in the mountains of the north of China. It was not until the time of the first emperor, who possibly means an improvement in the silk, instructed his Emperor, Shihung-Chu, to experiment with the silk worms which lived on the mulberry tree, to see if they could be improved.

In the almost pre-historic of the Chinese, the silk worm and the mulberry tree were raised in the mountains of the north of China. It was not until the time of the first emperor, who possibly means an improvement in the silk, instructed his Emperor, Shihung-Chu, to experiment with the silk worms which lived on the mulberry tree, to see if they could be improved.

In the almost pre-historic of the Chinese, the silk worm and the mulberry tree were raised in the mountains of the north of China. It was not until the time of the first emperor, who possibly means an improvement in the silk, instructed his Emperor, Shihung-Chu, to experiment with the silk worms which lived on the mulberry tree, to see if they could be improved.

### MAKING SILK AT FAMOUS CHENEY MILLS



The process of silk-making involves several stages, from the rearing of silkworms to the spinning of cocoons. The silkworms are reared on mulberry leaves and spun into cocoons. These cocoons are then reared and spun into silk threads. The threads are then woven into fabric. The Cheney Mills are known for their high-quality silk production.

The Cheney Mills are known for their high-quality silk production. The process involves rearing silkworms, spinning cocoons, and rearing threads. The Cheney Mills have a long history of producing high-quality silk for various industries.

Group of photos shows process of silk-making in various stages. Upper left—spinning; upper right—boxes; lower left—rearing; lower right—putting pressure.

### CHENEY MILLS

The Cheney Mills have a long history of producing high-quality silk. The process involves rearing silkworms, spinning cocoons, and rearing threads. The Cheney Mills have a long history of producing high-quality silk for various industries.

The Cheney Mills have a long history of producing high-quality silk. The process involves rearing silkworms, spinning cocoons, and rearing threads. The Cheney Mills have a long history of producing high-quality silk for various industries.

The Cheney Mills have a long history of producing high-quality silk. The process involves rearing silkworms, spinning cocoons, and rearing threads. The Cheney Mills have a long history of producing high-quality silk for various industries.

The Cheney Mills have a long history of producing high-quality silk. The process involves rearing silkworms, spinning cocoons, and rearing threads. The Cheney Mills have a long history of producing high-quality silk for various industries.

The Cheney Mills have a long history of producing high-quality silk. The process involves rearing silkworms, spinning cocoons, and rearing threads. The Cheney Mills have a long history of producing high-quality silk for various industries.

The Cheney Mills have a long history of producing high-quality silk. The process involves rearing silkworms, spinning cocoons, and rearing threads. The Cheney Mills have a long history of producing high-quality silk for various industries.

The Cheney Mills have a long history of producing high-quality silk. The process involves rearing silkworms, spinning cocoons, and rearing threads. The Cheney Mills have a long history of producing high-quality silk for various industries.

### JOHNSON CLUTCH IS USED EXTENSIVELY

The Carlin Johnson Machine Co. manufactures the Johnson Clutch, which is used extensively in various industries. The clutch is known for its durability and reliability.

### FIRST TROLLEY

The first trolley in Manchester was introduced in 1888. It was a small, single-deck vehicle that carried passengers to various parts of the city.

### GREEN SODA SHOP

The Green Soda Shop is located in Manchester and is known for its high-quality sodas. The shop has a long history of serving the community.

### MANCHESTER COMPANY NOW SENDS 98 CENTS DAILY TO MANCHESTER

The Manchester Company has announced that it will send 98 cents daily to Manchester. This is part of a larger initiative to support the local economy.

### WELDON'S DRUG STORE

Weldon's Drug Store is a well-known pharmacy in Manchester. It offers a wide variety of drugs and medical supplies.

### POTNAM & CO. AIDS INVESTING PUBLIC

Potnam & Co. is a prominent brokerage house in Manchester. It provides investment services to the public.

### MANCHESTER COMPANY

The Manchester Company is a large retail company in Manchester. It carries a wide variety of goods for its customers.

### GREEN SODA SHOP

The Green Soda Shop is a popular destination for soda lovers in Manchester. It offers a variety of flavored sodas.

### MANCHESTER COMPANY

The Manchester Company is a leading retail chain in Manchester. It is known for its quality products and customer service.

### WELDON'S DRUG STORE

Weldon's Drug Store is a trusted source for pharmaceuticals in Manchester. It provides excellent customer service.

### POTNAM & CO. AIDS INVESTING PUBLIC

Potnam & Co. is a leading financial institution in Manchester. It offers a range of investment and banking services.

# A. & S. HARTMAN

MANCHESTER 1883

A. HARTMAN, S. HARTMAN, M. HARTMAN, A. NEWFIELD

## Center Auto Supply Station

105-107 Center Street, South Manchester

Ernest Bentley, Prop.

When we opened our store under the trade name of the Center Auto Supply Company, we had but one idea in view, and that was to be a Supply Station.

Today we have "everything but the car."

In our stores can be found every need for the automobile, large or small. There are tires that will fit the small car and large ones for the large cars. Oils for all the different makes of cars, batteries that will stand up, are a few that we mention.

When again in need of anything in the supply line try our stores.

—FIRM OF—

Home of the

# CONN. SUMATRA TOBACCO CO.

Plantation: BUCKLAND, CONN. Office: 231 STATE ST., HFD., CT.

## The National Cash Register Co.

Hartford, Connecticut

J. F. Seohrist, Sales Agent, 198 Pearl Street, Cor. Haynes, Tel. 2-4725

## Knitting Company

Nationally Known

Home of the

# CONN. SUMATRA TOBACCO CO.

Plantation: BUCKLAND, CONN. Office: 231 STATE ST., HFD., CT.

## Weldon's Drug Store

Weldon's Drug Store is a well-known pharmacy in Manchester. It offers a wide variety of drugs and medical supplies.

## Manchester News Shop

North End Agency For A. G. Spalding & Bros. Athletic Goods

## Established on a good drug store, doing business at the same location, for thirty-five years.

Prescription work our specialty.

We always carry a general line of drugs and drug sundries.

Temping soda water, ice cream and confectionery.

## Weldon's Drug Store

Weldon's Drug Store is a well-known pharmacy in Manchester. It offers a wide variety of drugs and medical supplies.

**KETTEL'S TO OPEN FALL DISPLAY FOR CENTENNIAL WEEK**

Special Arrangements Made in Preparation For Coming Event.

STORE'S VACATION TRIAL SUCCESSFUL

Experiment in Giving Holiday to All At One Time Satisfactory.

The feature of centennial week with the O. E. Kettel Furniture Co. will be the fall display, this annual feature having been closed to mark this week, and in view of the special occasion a great many more than the usual attention has been devoted to preparations for the event.

It will be recalled that Kettel's was closed entirely for two weeks in August as the experiment in giving all employees a complete vacation at one time. This caused a great deal of favorable comment since the reopening about four weeks ago was very busy catching up and getting ready for the fall opening this week. Alterations have been made to the plan to show the increased stock to better advantage, and extra help has been added to the sales force. The business expected this fall has been exceeded in many ways, and one more man inside, another outside, and a new line of goods, all of which have been added to the store. The store is now open to the public with a special attention which Kettel's is always given. The store is now open to the public with a special attention which Kettel's is always given. The store is now open to the public with a special attention which Kettel's is always given.

**MANCHESTER SALVATION ARMY CITADEL**

Building erected in 1908 is center of organization activities in town.

Building erected in 1908 is center of organization activities in town.

**CAMPBELL HAS WIDE MARKET EXPERIENCE**

Loyalty and Progressiveness His Outstanding Qualities.

Irving P. Campbell, proprietor of Campbell Market, has been elected to the position of president of the Progressive Business Men's Association in town, with honor. He has been elected to the position of president of the Progressive Business Men's Association in town, with honor. He has been elected to the position of president of the Progressive Business Men's Association in town, with honor.

**BUZZ PRODUCTS IN ALMOST ALL STATES**

Company Enjoys Healthy Growth Within Last Ten Years

Now New England's Leading NURSERYMEN

C. E. Wilson & Co. Inc. the largest nursery in New England has moved to advertise Manchester. The new office on Oakland street, is a large, airy, modern building, and the company's products, which are grown in Manchester, Dugway, Ellington and South Windsor, being shipped to all parts of the country. The company also has a nursery in France.

**MARVIN GREEN**

A high class development located in the best section of Manchester.

ONE THIRD OF THE LOTS ALREADY SOLD, PURCHASED BY BUYERS WHO ARE TO BUILD SINGLE FAMILY HOUSES AS THEIR FUTURE HOMES.

WALKS, CITY WATER, GOOD SCHOOLS AND AN IDEAL LOCATION.

THE MOST REASONABLE PRICES EVER ASKED FOR ANY SIMILAR DEVELOPMENT.

**ELMAN & ROLSTON**

OWNERS

Office on Grounds Tel. 1330

**C. E. WILSON & CO.'S OUTPUT TREMENDOUS**

Growers Making Plans for Construction of New Plant in 1924

C. E. Wilson of the C. E. Wilson Co. has been a resident of Manchester for many years. He has been a resident of Manchester for many years. He has been a resident of Manchester for many years.

**Stevens-Conkey Auto Co.**

20-22 East Center Street So. Manchester

**Studebaker**

1924 MODELS ARE HERE

Studebaker cars for 1924 are offered to the public with a conviction that they will enhance the Studebaker reputation, which for seventy-one years has stood for a high order of quality and value.

For those who demand the utmost in closed car convenience, comfort and beauty, a Studebaker Sedan makes an instant appeal.

For A Demonstration Call 840

**McGOVERN Granite Company**

147 Allyn Street, Hartford, Connecticut.

**McGOVERN Granite Company**

147 Allyn Street, Hartford, Connecticut.

**CAPTAIN NICHOLS SPAULDING AGENT**

Enormous Stock of Hardware and Farm Implements Carried

SPORTSMEN ALWAYS FIND THEIR NEEDS

Experienced Salesmen Aid in Keeping Track of Many Things

**LARGE CLIENTELE FOR BEAUTY SHOP**

METTER'S SHOP HAS GROWN RAPIDLY

**Manchester can be proud of its Memorials and Buildings**

We extend our heartiest congratulations to Manchester upon the celebration of its one hundredth anniversary. Manchester may well be proud of its public buildings, streets and memorials, and we are justly proud to have had a hand in making Manchester beautiful.

We have made many memorials for Manchester people but we consider that the retaining wall, finished by the McGovern Granite Co. is a creditable and conspicuous piece of work. The work was all hand done and consumed a period of two months. As the wall stands today it is a beautiful addition to the many other enduring structures and memorials in Manchester.

Only skilled craftsmanship is employed in our establishment which is a guarantee that all work ordered will be done satisfactorily.

**McGOVERN Granite Company**

147 Allyn Street, Hartford, Connecticut.

**McGOVERN Granite Company**

147 Allyn Street, Hartford, Connecticut.

**Victrolas and Victor Records**

**Pianos and Player Pianos**

McPHAIL PIANO The second Oldest in the United States. BRADBURY The standard for over 70 years. Jacob Brothers and Cable-Nelson Pianos. Musical Merchandise and Accessories

**KEMP'S MUSIC HOUSE**

"Everything Musical"

707 Main Street So. Manchester, Conn.

**TRUST COMPANY HAS HELPED TOWN GROW**

Bank's Own Progress Since Beginning in 1905 Has Been Marked

**TRUST COMPANY HAS HELPED TOWN GROW**

Bank's Own Progress Since Beginning in 1905 Has Been Marked

The history of this community which has developed and grown in a business and agricultural way will show its progress to be due to great measure to good banking facilities and an intelligent application of the economic function in its needs.

**McGOVERN Granite Company**

147 Allyn Street, Hartford, Connecticut.

**McGOVERN Granite Company**

147 Allyn Street, Hartford, Connecticut.

**Victrolas and Victor Records**

**Pianos and Player Pianos**

McPHAIL PIANO The second Oldest in the United States. BRADBURY The standard for over 70 years. Jacob Brothers and Cable-Nelson Pianos. Musical Merchandise and Accessories

**KEMP'S MUSIC HOUSE**

"Everything Musical"

707 Main Street So. Manchester, Conn.

**CELEBRATION TAKES PLACE THIS WEEK**

(Continued from Page 1)

**CELEBRATION TAKES PLACE THIS WEEK**

(Continued from Page 1)

Sunday morning—Religious services with special features at all churches. Details to be given later.

Monday—Sacred Concert at Central Grounds.

Tuesday—Special music arranged by Mrs. R. E. Anderson, Elmore Watkins and Mrs. A. L. Crowell. Fred Patton, Manchester, talented singer who has achieved brilliant success in the musical world, will be heard.

**McGOVERN Granite Company**

147 Allyn Street, Hartford, Connecticut.

**McGOVERN Granite Company**

147 Allyn Street, Hartford, Connecticut.

**Victrolas and Victor Records**

**Pianos and Player Pianos**

McPHAIL PIANO The second Oldest in the United States. BRADBURY The standard for over 70 years. Jacob Brothers and Cable-Nelson Pianos. Musical Merchandise and Accessories

**KEMP'S MUSIC HOUSE**

"Everything Musical"

707 Main Street So. Manchester, Conn.

**TRUST COMPANY HAS HELPED TOWN GROW**

Bank's Own Progress Since Beginning in 1905 Has Been Marked

**TRUST COMPANY HAS HELPED TOWN GROW**

Bank's Own Progress Since Beginning in 1905 Has Been Marked

The history of this community which has developed and grown in a business and agricultural way will show its progress to be due to great measure to good banking facilities and an intelligent application of the economic function in its needs.

**McGOVERN Granite Company**

147 Allyn Street, Hartford, Connecticut.

**McGOVERN Granite Company**

147 Allyn Street, Hartford, Connecticut.

**Victrolas and Victor Records**

**Pianos and Player Pianos**

McPHAIL PIANO The second Oldest in the United States. BRADBURY The standard for over 70 years. Jacob Brothers and Cable-Nelson Pianos. Musical Merchandise and Accessories

**KEMP'S MUSIC HOUSE**

"Everything Musical"

707 Main Street So. Manchester, Conn.

**Transportation**

The Second Family Necessity

After a home, the modern family needs its own transportation unit. Modern life demands an efficient automobile for the time it saves and the health it gives.

For Economical Transportation

**CHEVROLET**

5-Passenger Sedan \$890 Delivered in Manchester

is the ideal all-year family car, combining the comforts and atmosphere of home with high-grade body construction, mechanical reliability, ease of handling, and low purchase and operating costs. It affords ample room for the whole family. It is easy to drive and easy to care for. It protects from bad weather, yet it can be opened wide for cool comfort in the scorching days of summer. See Chevrolet first.

Prices at Manchester

Five-Pass. Sedan	\$890
Five-Pass. Touring	\$975
Five-Pass. Cabriolet	\$1060
Five-Pass. Sedan	\$1145
Five-Pass. Sedan	\$1230
Five-Pass. Sedan	\$1315
Five-Pass. Sedan	\$1400
Five-Pass. Sedan	\$1485
Five-Pass. Sedan	\$1570
Five-Pass. Sedan	\$1655

**W. R. TINKER, Jr.**

130 CENTER STREET, SO. MANCHESTER

**To Commemorate Manchester's Centennial**

And to Express Our Appreciation for the Support We Have Received From Its Citizens Ever Since We Established Our Branch in Manchester Several Years Ago—We Will Make a

**10 Day Offer of \$100 Down, One Year to Pay Balance**

ON A LIMITED NUMBER OF

**Ford Two-Door Sedans**

Which Is One-Half of Our Regular Down Payment of \$218

**PRICE \$595**

F. O. B. Factory

**ELMER AUTOMOBILE COMPANY**

Pioneer Ford Dealers SO. MANCHESTER

**C. E. House & Son, Inc.**

Established in 1853 By E. M. HOUSE

Outfitters to Men, Young Men and Boys For 70 Years.

**Having Right Merchandise Is Our Public Duty**

A good store owes it to you to show at all times the newest styles, the finest goods and plenty of them.

This "Big Store With Little Prices"

Wouldn't consider we were performing a service unless we did.

Kuppenheimer Clothes Waverly Shirts  
Franklin Hats Cheney Cravats

Munsingwear and Duofold Underwear. Notaseme Hose

Co-Operative-Emerson and Selz Six Shoes  
Dorothy Dodd Footwear for Women  
Buster Browns for Boys and Girls

"Keds" and Rubbers for Whole Family

We cordially invite your inspection of our store and merchandise.

**C. E. House & Son, Inc.**

HEAD TO FOOT CLOTHING.

**ROBERT J. SMITH IS BUSY REALTOR**

Has Always Been Ready to Serve Interests of Town

**WILL BE CANDIDATE AT COMING ELECTION**

Represented Manchester Three Terms in Legislature

Robert J. Smith is among Manchester's prominent real estate men. He has been ready to serve the interests of the town for many years. He has represented Manchester in the legislature for three terms. He is now a candidate for the legislature at the coming election.

**STRICKLAND IS MAN OF MANY INTERESTS**

Has Many Business Connections and Has Served in Town Government.

Walter A. Strickland, lumber manufacturer, tobacco grower, quarry owner and president of the Lumber Machine Company, one of Manchester's leading industries, is to be one of Manchester's representatives. He was born in Hampton in 1877, but removed to South Hadley, Mass., where he received his schooling. His parents moved back to Manchester in 1890. He was in the legislature for three terms. He is now a candidate for the legislature at the coming election.

**DODGE SALESROOMS BEING ENLARGED**

Walter A. Strickland, lumber manufacturer, tobacco grower, quarry owner and president of the Lumber Machine Company, one of Manchester's leading industries, is to be one of Manchester's representatives. He was born in Hampton in 1877, but removed to South Hadley, Mass., where he received his schooling. His parents moved back to Manchester in 1890. He was in the legislature for three terms. He is now a candidate for the legislature at the coming election.

**MANCHESTER GAS CO. NOW SERVING 2,300**

Co-operated With Officials in Improvement of Main Street

**ORDERS 6,500 FEET OF PIPE FOR 1924**

Franchise Taken Over in 1918 from Cheney Brothers

The Manchester Gas Co. will sell the gas to the city of Manchester. The company has ordered 6,500 feet of pipe for 1924. The franchise was taken over in 1918 from Cheney Brothers.

**CATERER TO MANCHESTER PEOPLE**

South Hadley Catering Works truck ready for daily trip of delivering bottled goods to thirty Manchester people.



South Hadley Catering Works truck ready for daily trip of delivering bottled goods to thirty Manchester people.

**STARTED BUSINESS ON SMALL SCALE**

MAURICE J. MADON, with one or two exceptions is one of Manchester's oldest business men. He started in business with a small scale of operations. He has since expanded his business and is now a successful entrepreneur.

**FOLLY BROOK ICE CO. HEAD A COLLEGE MAN**

J. T. Wood, head of the Folly Brook Ice Company and a trucking business, is a graduate of Yale with a degree in civil engineering. He has been successful in his business and is now a prominent figure in the community.

**WAR VETERAN HEADS WM. G. GLENNEY CO.**

Firm Does a Thriving Coal and Lumber Business in Town.

**PAGANI BROTHERS TWO STORES**

887 Main Street South Manchester 169 North Main Street Manchester

We have been serving the people of Manchester in the confectionery line for the past nine years. Our first store, located at No. 169 North Main Street will continue to care for our North End friends, where we have a complete line of candies, soda from the fountain, ice cream, cigars and tobacco, besides a general line of groceries. In opening our Goodie Shoppe at No. 887 Main Street we came to South Manchester strangers to some, but well known to others. A model store, equipped with the best in the way of fountains, serving tables, show cases and fruit display has already proven that South Manchester residents appreciate our efforts. Here we have the best in candies, fruit syrups at the fountain, cigars and tobacco and fruit that is fresh at all times. To this we are adding a light lunch much appreciated by the women of Manchester during shopping hours.

**M-GOVERN CO. WELL KNOWN BUILDERS OF GRANITE MONUMENTS**

The Metropolitan Granite Co. of No. 187 Allen Street, Hartford, is a company which has done considerable work in Manchester. This summer the company, by an active management and the cooperation of the town, has completed a fine granite monument for the town. The monument is a fine example of the company's work and is a credit to the town.

**TAVERN LOOKS FOR RECORD BUSINESS**

The Tavern, conducted by Mrs. Watson, is located in the Centennial grounds and because of this is sure to be a busy place during the coming week. The tavern has a fine menu and is a popular place for a meal. The tavern is a credit to the town and is a source of pride for the community.

**MONTEMURRO HAS MODEL EQUIPMENT**

Louis Montemurro is a native of Meriden and was born in the business in which he is now engaged. He has a fine collection of model equipment and is a prominent figure in the community. His collection is a credit to the town and is a source of pride for the community.

**THE E. E. HILLIARD CO.**

ESTABLISHED 1794

**WOOLEN MANUFACTURERS**

BUCKLAND, CONN.

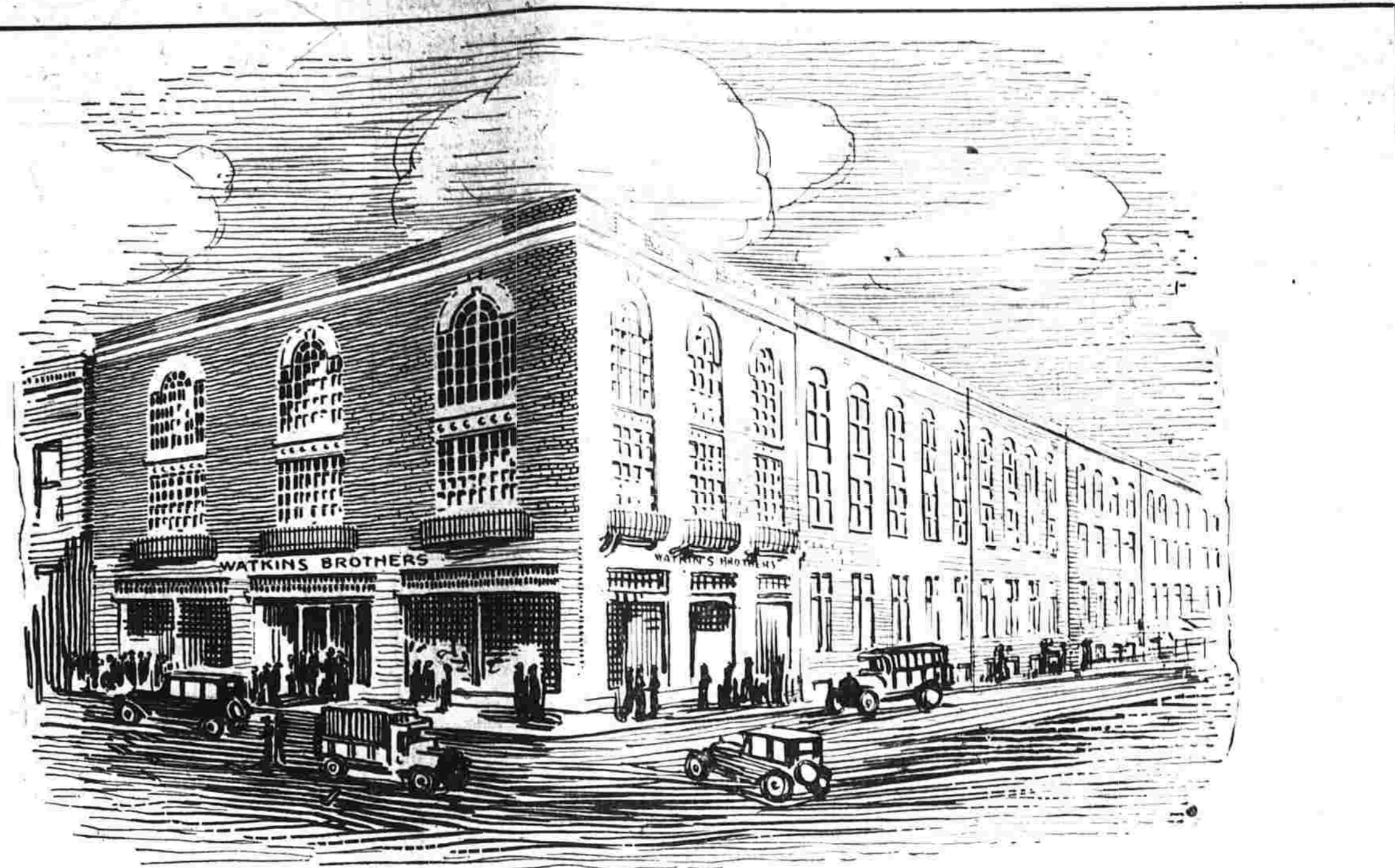
**MANCHESTER DAILY NEWS**

Centennial visitors will be welcome to come in and inspect our modern and up-to-the-minute plant.

The News---When It's News---In the "News"

2¢ per copy

56-58 COTTAGE STREET SOUTH MANCHESTER



**A WORD OF WELCOME To Centennial Visitors**

"ESTA es su Casa de Usted." Those who have travelled in Spanish speaking countries will recall this expressive phrase of hospitality—"house is yours."

At the present time when we are extending a cordial invitation to Centennial visitors to Manchester to become acquainted with the many service features of this establishment, we can think of nothing that will better convey our welcome than to repeat, "house is yours."

Our regular patrons frequently delight us with expressions that indicate their sense of possession of this establishment. They feel that "this house is theirs," and we want newcomers to Manchester to feel the same way.

We shall endeavor to render a type of service at all times that shall indicate our desire to have the newest members in the large family of our patrons look upon this house as theirs.

**SINCE 1874**

Singularly enough our own Semi-Centennial mission by one year the hundredth anniversary of the incorporation of the town. During the whole latter half of Manchester's history we have been developing along with the growth of the town. In fact, when our new building was erected three years ago most people felt that we had expanded much too fast for Manchester but already we have been obliged to seek storage room outside.

Not the least among the attractive features that will draw visitors to Centennial Week is this new store, voted in a nation-wide poll of manufacturers, dealers and traveling men the finest small town furniture store in the United States.

The splendid piano warehouses at 241 Asylum Street, Hartford, home of the world famous Steinway Piano, and the attractive music store in Bristol are operated by the same corporation.

**HOW TO GET HERE**

From Hartford and points West of the Connecticut River—Via Hartford. If motoring, follow Boulevard, crossing bridge, through East Hartford and Burnside to "The Center," South Manchester (at white church.) Turn right down Manchester's new Main Street Church, on yard. Our store is nearly opposite St. James' Church, on corner of Main and Oak Streets. Plenty of unrestricted parking space on both sides of Main Street in front of our store.

If coming by trolley, take car marked South Manchester at State and Market Streets. It stops at our door.

From Wallingford, follow Post Road through Andover and Manchester Green to "The Center," (at white church.) Turn left down Main Street.

From Rockville, turn left at Manchester Railroad Station, crossing railroad tracks, straight through "The Center" to our store.

**WATKINS BROTHERS, Inc.**

SINCE 1874

MANCHESTER DAIRY ICE CREAM POPULAR
Manufactured Under Most Sanitary Conditions in Model Plant
COMPANY SUPPLIES OUT OF TOWN TRADE
Business Started Nine Years Ago Has Been Very Successful

STATE LIBRARY HAS HISTORICAL DATA
Ecclesiastical Affairs of Early Manchester Are Available
A student of affairs relating to the early history of Manchester will find in the State Library...

TURNPIKE COMPANY'S CHARTERING OPPOSED
Concern Established Toll Gates
The Hartford & Tolland Turnpike Company, operating from Hartford to Middletown...

MANCHESTER FLORAL SHOP GIVES SERVICE
"Service First, Quality Always"
The slogan of the Manchester Floral shop, located in spacious quarters in the Park building...

DO BIG COAL TRADE
Company Also Does Trucking Business—Growth Has Been Rapid.
The firm of G. E. Willis & Son was organized in January 1920...

DEPOT SQUARE LUNCH HAS BECOME POPULAR
Since Raymond Charter bought the Depot Square lunch room...

VETERAN INDIAN STILL DOING DUTY
On Depot Square, well over towards the south end of the road...

"HERALD" WAS FIRST ISSUED IN 1881
Manchester Newspaper Has Had Progressive Life Since Then
Manchester's first newspaper was the "Herald," published by a man named Kingsbury...

EXPANSION OF PARK HILL FLOWER SHOP
Store Founded by Mrs. O. Miner and J. C. Pentland Carries Big Stock
The Park Hill Flower Shop, which today enjoys a prosperous business...

McNAMARA DRUG STORE POPULAR
George McNamara, proprietor of the McNamara Pharmacy at No. 100 Main street...

AGENCY FOR COMPLETE LINE OF DRUGS
Kodaks
Movie Pens
Waterman's Ideal
Eversharp Pencils
Ingersoll Watches

CHENEY PROJECTS CARRIED OUT BY A. W. BRYNE & SON
The Park Hill Flower Shop was started in a humble way in one of the small stores near the center...

UTILITIES DISTRICT ESTABLISHED IN 1915
The Eleventh School and Utilities District, incorporated by legislative act...

NORTH END GAS STATION IS IMPORTANT SPOT
Carroll Charter has proven what a valuable addition to business and convenience it is to have a gas station...

WATERWORKS CONSTRUCTION AND FOUNDATION WORK HAS BEEN IN PROGRESS SINCE 1914
Among their important Manchester jobs was a contract through the Cheney Brothers property along Hartford avenue...

WATERWORKS CONSTRUCTION AND FOUNDATION WORK HAS BEEN IN PROGRESS SINCE 1914
Among their important Manchester jobs was a contract through the Cheney Brothers property along Hartford avenue...

WATERWORKS CONSTRUCTION AND FOUNDATION WORK HAS BEEN IN PROGRESS SINCE 1914
Among their important Manchester jobs was a contract through the Cheney Brothers property along Hartford avenue...

WATERWORKS CONSTRUCTION AND FOUNDATION WORK HAS BEEN IN PROGRESS SINCE 1914
Among their important Manchester jobs was a contract through the Cheney Brothers property along Hartford avenue...

WATERWORKS CONSTRUCTION AND FOUNDATION WORK HAS BEEN IN PROGRESS SINCE 1914
Among their important Manchester jobs was a contract through the Cheney Brothers property along Hartford avenue...

WATERWORKS CONSTRUCTION AND FOUNDATION WORK HAS BEEN IN PROGRESS SINCE 1914
Among their important Manchester jobs was a contract through the Cheney Brothers property along Hartford avenue...

WATERWORKS CONSTRUCTION AND FOUNDATION WORK HAS BEEN IN PROGRESS SINCE 1914
Among their important Manchester jobs was a contract through the Cheney Brothers property along Hartford avenue...

WATERWORKS CONSTRUCTION AND FOUNDATION WORK HAS BEEN IN PROGRESS SINCE 1914
Among their important Manchester jobs was a contract through the Cheney Brothers property along Hartford avenue...

WATERWORKS CONSTRUCTION AND FOUNDATION WORK HAS BEEN IN PROGRESS SINCE 1914
Among their important Manchester jobs was a contract through the Cheney Brothers property along Hartford avenue...

WATERWORKS CONSTRUCTION AND FOUNDATION WORK HAS BEEN IN PROGRESS SINCE 1914
Among their important Manchester jobs was a contract through the Cheney Brothers property along Hartford avenue...

WATERWORKS CONSTRUCTION AND FOUNDATION WORK HAS BEEN IN PROGRESS SINCE 1914
Among their important Manchester jobs was a contract through the Cheney Brothers property along Hartford avenue...

WATERWORKS CONSTRUCTION AND FOUNDATION WORK HAS BEEN IN PROGRESS SINCE 1914
Among their important Manchester jobs was a contract through the Cheney Brothers property along Hartford avenue...

WATERWORKS CONSTRUCTION AND FOUNDATION WORK HAS BEEN IN PROGRESS SINCE 1914
Among their important Manchester jobs was a contract through the Cheney Brothers property along Hartford avenue...

WATERWORKS CONSTRUCTION AND FOUNDATION WORK HAS BEEN IN PROGRESS SINCE 1914
Among their important Manchester jobs was a contract through the Cheney Brothers property along Hartford avenue...

WATERWORKS CONSTRUCTION AND FOUNDATION WORK HAS BEEN IN PROGRESS SINCE 1914
Among their important Manchester jobs was a contract through the Cheney Brothers property along Hartford avenue...

WATERWORKS CONSTRUCTION AND FOUNDATION WORK HAS BEEN IN PROGRESS SINCE 1914
Among their important Manchester jobs was a contract through the Cheney Brothers property along Hartford avenue...

WATERWORKS CONSTRUCTION AND FOUNDATION WORK HAS BEEN IN PROGRESS SINCE 1914
Among their important Manchester jobs was a contract through the Cheney Brothers property along Hartford avenue...

WATERWORKS CONSTRUCTION AND FOUNDATION WORK HAS BEEN IN PROGRESS SINCE 1914
Among their important Manchester jobs was a contract through the Cheney Brothers property along Hartford avenue...

WATERWORKS CONSTRUCTION AND FOUNDATION WORK HAS BEEN IN PROGRESS SINCE 1914
Among their important Manchester jobs was a contract through the Cheney Brothers property along Hartford avenue...

WATERWORKS CONSTRUCTION AND FOUNDATION WORK HAS BEEN IN PROGRESS SINCE 1914
Among their important Manchester jobs was a contract through the Cheney Brothers property along Hartford avenue...

WATERWORKS CONSTRUCTION AND FOUNDATION WORK HAS BEEN IN PROGRESS SINCE 1914
Among their important Manchester jobs was a contract through the Cheney Brothers property along Hartford avenue...

WATERWORKS CONSTRUCTION AND FOUNDATION WORK HAS BEEN IN PROGRESS SINCE 1914
Among their important Manchester jobs was a contract through the Cheney Brothers property along Hartford avenue...

WATERWORKS CONSTRUCTION AND FOUNDATION WORK HAS BEEN IN PROGRESS SINCE 1914
Among their important Manchester jobs was a contract through the Cheney Brothers property along Hartford avenue...

WATERWORKS CONSTRUCTION AND FOUNDATION WORK HAS BEEN IN PROGRESS SINCE 1914
Among their important Manchester jobs was a contract through the Cheney Brothers property along Hartford avenue...

WATERWORKS CONSTRUCTION AND FOUNDATION WORK HAS BEEN IN PROGRESS SINCE 1914
Among their important Manchester jobs was a contract through the Cheney Brothers property along Hartford avenue...

WATERWORKS CONSTRUCTION AND FOUNDATION WORK HAS BEEN IN PROGRESS SINCE 1914
Among their important Manchester jobs was a contract through the Cheney Brothers property along Hartford avenue...

WATERWORKS CONSTRUCTION AND FOUNDATION WORK HAS BEEN IN PROGRESS SINCE 1914
Among their important Manchester jobs was a contract through the Cheney Brothers property along Hartford avenue...

WATERWORKS CONSTRUCTION AND FOUNDATION WORK HAS BEEN IN PROGRESS SINCE 1914
Among their important Manchester jobs was a contract through the Cheney Brothers property along Hartford avenue...

WATERWORKS CONSTRUCTION AND FOUNDATION WORK HAS BEEN IN PROGRESS SINCE 1914
Among their important Manchester jobs was a contract through the Cheney Brothers property along Hartford avenue...

WATERWORKS CONSTRUCTION AND FOUNDATION WORK HAS BEEN IN PROGRESS SINCE 1914
Among their important Manchester jobs was a contract through the Cheney Brothers property along Hartford avenue...

WATERWORKS CONSTRUCTION AND FOUNDATION WORK HAS BEEN IN PROGRESS SINCE 1914
Among their important Manchester jobs was a contract through the Cheney Brothers property along Hartford avenue...

WATERWORKS CONSTRUCTION AND FOUNDATION WORK HAS BEEN IN PROGRESS SINCE 1914
Among their important Manchester jobs was a contract through the Cheney Brothers property along Hartford avenue...

WATERWORKS CONSTRUCTION AND FOUNDATION WORK HAS BEEN IN PROGRESS SINCE 1914
Among their important Manchester jobs was a contract through the Cheney Brothers property along Hartford avenue...

WATERWORKS CONSTRUCTION AND FOUNDATION WORK HAS BEEN IN PROGRESS SINCE 1914
Among their important Manchester jobs was a contract through the Cheney Brothers property along Hartford avenue...

WATERWORKS CONSTRUCTION AND FOUNDATION WORK HAS BEEN IN PROGRESS SINCE 1914
Among their important Manchester jobs was a contract through the Cheney Brothers property along Hartford avenue...

WATERWORKS CONSTRUCTION AND FOUNDATION WORK HAS BEEN IN PROGRESS SINCE 1914
Among their important Manchester jobs was a contract through the Cheney Brothers property along Hartford avenue...

WATERWORKS CONSTRUCTION AND FOUNDATION WORK HAS BEEN IN PROGRESS SINCE 1914
Among their important Manchester jobs was a contract through the Cheney Brothers property along Hartford avenue...

WATERWORKS CONSTRUCTION AND FOUNDATION WORK HAS BEEN IN PROGRESS SINCE 1914
Among their important Manchester jobs was a contract through the Cheney Brothers property along Hartford avenue...

WATERWORKS CONSTRUCTION AND FOUNDATION WORK HAS BEEN IN PROGRESS SINCE 1914
Among their important Manchester jobs was a contract through the Cheney Brothers property along Hartford avenue...

WATERWORKS CONSTRUCTION AND FOUNDATION WORK HAS BEEN IN PROGRESS SINCE 1914
Among their important Manchester jobs was a contract through the Cheney Brothers property along Hartford avenue...

WATERWORKS CONSTRUCTION AND FOUNDATION WORK HAS BEEN IN PROGRESS SINCE 1914
Among their important Manchester jobs was a contract through the Cheney Brothers property along Hartford avenue...

WATERWORKS CONSTRUCTION AND FOUNDATION WORK HAS BEEN IN PROGRESS SINCE 1914
Among their important Manchester jobs was a contract through the Cheney Brothers property along Hartford avenue...

WATERWORKS CONSTRUCTION AND FOUNDATION WORK HAS BEEN IN PROGRESS SINCE 1914
Among their important Manchester jobs was a contract through the Cheney Brothers property along Hartford avenue...

WATERWORKS CONSTRUCTION AND FOUNDATION WORK HAS BEEN IN PROGRESS SINCE 1914
Among their important Manchester jobs was a contract through the Cheney Brothers property along Hartford avenue...

WATERWORKS CONSTRUCTION AND FOUNDATION WORK HAS BEEN IN PROGRESS SINCE 1914
Among their important Manchester jobs was a contract through the Cheney Brothers property along Hartford avenue...

WATERWORKS CONSTRUCTION AND FOUNDATION WORK HAS BEEN IN PROGRESS SINCE 1914
Among their important Manchester jobs was a contract through the Cheney Brothers property along Hartford avenue...

WATERWORKS CONSTRUCTION AND FOUNDATION WORK HAS BEEN IN PROGRESS SINCE 1914
Among their important Manchester jobs was a contract through the Cheney Brothers property along Hartford avenue...

WATERWORKS CONSTRUCTION AND FOUNDATION WORK HAS BEEN IN PROGRESS SINCE 1914
Among their important Manchester jobs was a contract through the Cheney Brothers property along Hartford avenue...

WATERWORKS CONSTRUCTION AND FOUNDATION WORK HAS BEEN IN PROGRESS SINCE 1914
Among their important Manchester jobs was a contract through the Cheney Brothers property along Hartford avenue...

HOTEL SHERIDAN

Manchester now has a model hotel.
Opened for business today, located in the heart of the business section of Manchester, fulfilling a long-felt want in the thriving town of Manchester.

Suites, double, adjoining and single rooms, all with tub and shower baths, hot and cold water, telephone in each room and homelike equipment, twin beds in each room.
Two dining rooms, suitable for banquets, wedding parties and similar gatherings.

JOHN F. SHERIDAN, Proprietor
605 Main St. SOUTH MANCHESTER Phone 197

When You Come to the Manchester Centennial Notice the People Who Drive Around in The Good MAXWELL
The Good MAXWELL
ONE STEP FROM PARK THEATER
Johnson Block So. Manchester, Conn.
DRUGS, Sundries, and Sick Room Supplies

SMITH'S GARAGE
30 BISSELL STREET
PHONE 660

A. W. Bryne & Son
GENERAL CONTRACTOR
Hartford, Conn.

Louis R. Montemurro
Fancy Groceries, Fresh Fruit
Soda, both at the fountain and in bottles to take out. Candy, Tobacco, Cigarettes and best brands of Cigars. Papers and Magazines.
The leading confectionery store on the West Side.
95 PINE STREET. SOUTH MANCHESTER. PHONE 580

Geo. E. McNamara Drug Co.
Prescription PHARMACISTS
Johnson Block So. Manchester, Conn.
ONE STEP FROM PARK THEATER
Phones 410-582
DRUGS, Sundries, and Sick Room Supplies
No need of asking more than we ask for the best goods, and you cannot afford to sacrifice quality by paying less.
We carry a complete stock of Crutches, Trusses, Shoulder Braces, Waist and Ankle Bands, Elastic Stockings, Suppositories, Supporters, Surgical Bandages of all kinds, Careful attention to special orders.

Arch Preserver Shoes
Your feet never get a vacation at the outing you enjoy it means nothing to your feet except more work. Are the shoes you are wearing built to give you this comfort? If not why not try Wright's Arch Preserver Shoes. There is a support at the arch where support is needed. We have them in the smartest of styles. Give your feet a vacation. Make your next buy Wright's Arch Preserver and forget you ever had tired feet.

Mallory Hats
Let us prove to you that our hats have all the quality that can be put into a hat at any price. No amount of money will buy better style, more wear than you get in a Mallory hat. A new hat will do wonders for one's appearance. Get under a Mallory and you are certainly dressed up. All Fall styles are arrived.

Society Brand Clothes
For the man that cares to dress well this line of clothing appeals most. They have everything up to the minute for style and wear. May we have the pleasure of showing you our new Fall models?
Also a full line of Carter's Underwear. Earl & Wilson Shirts; Traveler's; Ladies' Queen Quality and Jockey Shoes; Dr. Posner's for the Children and Ralston, Wright's and Bannister Shoes for Men.
G. W. SMITH
900-975 MAIN STREET 80, MANCHESTER, CONN.

TURNPIKE COMPANY'S CHARTERING OPPOSED
Concern Established Toll Gates
The Hartford & Tolland Turnpike Company, operating from Hartford to Middletown, has been prominent for fifty years and has been prominent for fifty years and has been prominent for fifty years...

MANCHESTER FLORAL SHOP GIVES SERVICE
"Service First, Quality Always"
The slogan of the Manchester Floral shop, located in spacious quarters in the Park building, is "Service First, Quality Always." With convenient delivery service, they also carry a full line of floral decorations and are displaying in their shop a large stock of flowers and plants...

WATERWORKS CONSTRUCTION AND FOUNDATION WORK HAS BEEN IN PROGRESS SINCE 1914
Among their important Manchester jobs was a contract through the Cheney Brothers property along Hartford avenue...

JOHNSON MARINE REVERSE GEAR
The No. 0 Johnson Marine Reverse Gear is used as a part of a 5 H. P. Maritre Gas Engine which we also manufacture.

THE JOHNSON FRICTION CLUTCH
IS THE RELIABLE AND EFFICIENT LINE-SHAFT, COUNTER SHAFT AND MACHINE TOOL CLUTCH
All machinery cannot be driven from line-shaft on account of the difference in speed and reverse motion desired.
The Johnson Double Clutch is designed to take care of these conditions. Requires but little more space than a single clutch.
Our engineers will be glad to work out your clutch problems for you. Send for clutch information blank.
See Our Exhibit "Industrial Exhibition," Recreation Bldg., School St., Manchester, South, October 1st to 7th.
THE CARLYLE JOHNSON MACHINE CO., MANCHESTER, CONN.

MANCHESTER FLORAL SHOP GIVES SERVICE
"Service First, Quality Always"
The slogan of the Manchester Floral shop, located in spacious quarters in the Park building, is "Service First, Quality Always." With convenient delivery service, they also carry a full line of floral decorations and are displaying in their shop a large stock of flowers and plants...

HOLL HAS DEVELOPED MANY LARGE TRACTS

Has Been Important Factor in Real Estate Changes in Town. CAME TO MANCHESTER TWENTY YEARS AGO

ROBINSON'S MARKET EXPERIENCE BROAD

Learned Meat Trade in His Teens—Now Also Has Confectionery Store.

MANCHESTER COMMUNITY CLUB CENTER OF SOCIAL ACTIVITY



MANCHESTER MEN HEROES IN WAR

Three Honored With Distinguished Service Crosses

The courses and driving of Manchester men entered in the heavy contest of the World War may well be as an inspiration to the youth of Manchester.

DR. SQUIRES SHOWS OPHTHALMOLOGIST'S WORTH

Dr. Merwyn H. Squires, doctor of ophthalmology, with office at No. 416 Main street, is another man who believes in the possibilities in Manchester.

HEADQUARTERS FOR TOBACCO GROWERS

Olds & Whipple, Hartford Store, Has Large Manchester Patronage

There is no firm better known in Hartford County than Olds & Whipple, which numbers among its customers many Manchester and Middletown tobacco growers.

R. I. TEXTILE CO. HAS GOOD PATRONAGE

The Rhode Island Textile Company, one of Manchester's largest business concerns, has long been known for its high quality goods.

TOWN'S STREETS ARE WELL KEPT

Manchester Work of Edward Balf Co., of Highest Grade

DR. SQUIRES SHOWS OPHTHALMOLOGIST'S WORTH

Dr. Merwyn H. Squires, doctor of ophthalmology, with office at No. 416 Main street, is another man who believes in the possibilities in Manchester.

PAINT STORE FILLS LONG-FELT WANT

John Olson, who two months ago opened a show room at No. 1124 Center street, has been in the paint and papering contracting business in Manchester for eleven years.

GORMAN'S BUSINESS PROGRESSES STEADILY

The Pinehurst Grocery and the Pinehurst Soda Shop are at the halfway point between the South End and the North End and are conducted by Walter Gorman.

HES'S PLUMBING TRADE SHOWS BIG GROWTH

Edward Hes, plumber and heating dealer, has within the past two years made rapid strides in his line of business on Main street and in addition to carrying a complete line of plumbing materials added an electrical equipment department.

PARK THEATER PROGRAM WEEK OF OCTOBER 1ST.

MONDAY AND TUESDAY First National Attraction. "MILTON BILLS, IN 'THE ISLE OF LOST SHIPS' NEWS WEEKLY

COMING ATTRACTIONS

NORMA TALMADGE in "Abies of Vengeance." JACKIE COOGAN in "Circus Days." RICHARD BARHELMESS in "The Fighting Blade."

FIRST DOCTOR CAME TO TOWN IN 1788

Dr. George Griswold Pioneer Medical Practitioner in Manchester

Dr. George Griswold was the first physician to practice in Manchester. He was born in 1758 and died in 1838.

DEATH OVERTOOK MANCHESTER MAN IN 1863 BEFORE ASSUMING OFFICE

John A. Gurley, a native of Manchester, was appointed the first territorial manager of Reo in 1863.

TOBACCO GROWING ON LARGE SCALE

Tobacco growing in Manchester today is the foremost agricultural product, and the business of Manning & Kahn, Inc., is a representative one.

INVENTS NEW RING FOR AUTOMOBILES

Fred H. Horton, inventor of many appliances, has just completed a patent for a new ring for automobiles.

4,000 TELEPHONES IN MANCHESTER NOW

But in 1890 There Were Only Twenty-Nine Subscribers

The phenomenal growth of the telephone in Manchester is one of the most striking features of the town's progress.

Fifty Employees Required to Take Care of Business

The phenomenal growth of the telephone in Manchester is one of the most striking features of the town's progress.

PHENOMENAL GROWTH SINCE YEAR OF '89

Fifty Employees Required to Take Care of Business

The phenomenal growth of the telephone in Manchester is one of the most striking features of the town's progress.

J. A. GURLEY NAMED ARIZONA GOVERNOR

John A. Gurley, a native of Manchester, was appointed the first territorial manager of Reo in 1863.

TOBACCO GROWING ON LARGE SCALE

Manchester Has Big Investment in This Agricultural Pursuit

Tobacco growing in Manchester today is the foremost agricultural product, and the business of Manning & Kahn, Inc., is a representative one.

INVENTS NEW RING FOR AUTOMOBILES

Fred H. Horton, inventor of many appliances, has just completed a patent for a new ring for automobiles.

The New HIGH POWERED REO "SIXES"

5 Passenger Touring \$1335

7 Passenger Touring \$1365

5 Passenger Phaeton \$1545

4 Passenger Coupe \$1875

5 Passenger Sedan \$1985

4 Door Brougham \$2235

Speedwagon Chassis \$1185

All Prices F. O. B. Lansing Plus Federal Tax

RUSSELL P. TABER, Inc. 128 ALLYN STREET, HARTFORD, CONN.

Manchester Branch 309 Main Street

Never before in History has a truck of like capacity sold for as low a price.

Efficiently at a lower cost than by any other method.



MR. J. L. BOYCE

Mr. Boyce supervises the Manchester Branch and handles passenger car sales for that territory.

Manchester Branch Extends Service to Reo Owners

For the benefit and convenience of Reo owners in Manchester and vicinity we have, for the past few years, maintained a Branch Service Depot at 309 Main Street.

The New "Reo" Speedwagon

Dominates The Field

Never before in History has a truck of like capacity sold for as low a price.

It delivers the goods cheaper, quicker, more efficiently at a lower cost than by any other method.

No matter what the requirements of your business, we can supply a body to your needs from the many standard combinations thereby saving the cost of special body construction.

Let us talk over with you on your transportation problems.

Let us talk over with you on your transportation problems.

Let us talk over with you on your transportation problems.

Manchester's Beautiful Main Street

South Manchester has a beautiful Main Street — a street any town would be proud to possess.

We are proud to do our share towards making Main Street, South Manchester, a beautiful avenue of commerce.

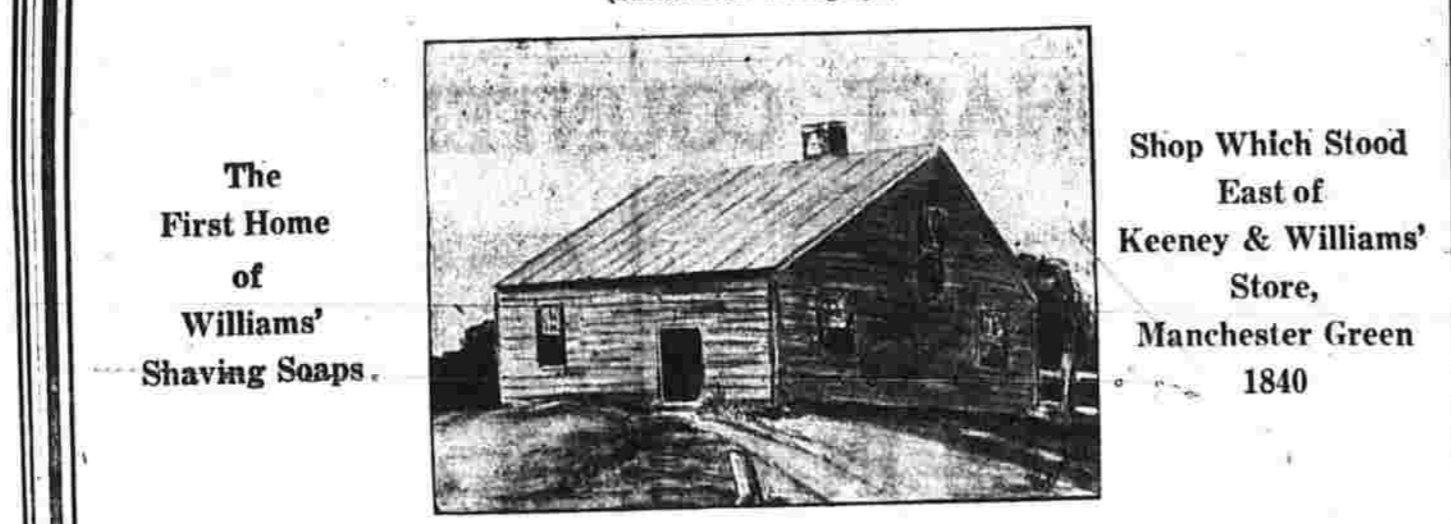
We believe that we have contributed a little to the success and aggressiveness of Manchester and hope to continue extending our services to whomsoever may need them.

THE EDWARD BALF CO.

CRUSHED STONE, SAND, TRUCKING EXCAVATING ASPHALT, CONCRETE and MACADAM PAVEMENTS

QUARRIES: NEWINGTON, CONN. TARIFFVILLE, CONN. OFFICE: 14 HAYNES ST. HARTFORD, CONN.

Birthplace of The J. B. Williams Company

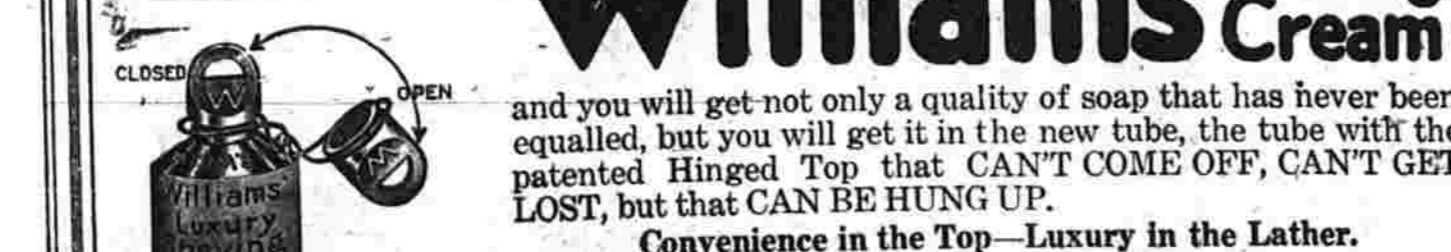


Manchester was the first home of The J. B. Williams Company. In 1840 James Baker Williams, partner in the modest Drug Firm of Keeney & Williams of Manchester Green, began to make Williams' Shaving Soaps.

Seven years later the infant industry was removed to Glastonbury and housed in a one-story wooden building 20x30 feet.

But Manchester is not just a Williams tradition. To this day it is a strong Williams Town.

Ask ANY DEALER in the town for



and you will get not only a quality of soap that has never been equalled, but you will get it in the new tube, the tube with the patented Hinged Top that CAN'T COME OFF, CAN'T GET LOST, but that CAN BE HUNG UP.

The J. B. Williams Company GLASTONBURY, CONN.

W. A. STRICKLAND

981 OAKLAND STREET, Manchester, Conn. Quarries at Buckingham

This is our contribution to Manchester's fine new Main Street.



One of our trucks carrying curbing measuring 18 feet long which was used on Main Street.

We are manufacturers and dealers in Native lumber, Granite Curbing, Crushed Stone, Building Stone, etc.

Below is a cut of the Hartford Theological Foundation Dormitory built of stone furnished by us.



Architect's specification calls for our stone for the new Episcopal Church at South Manchester, about to be erected.

MANCHESTER HOME OF CHENEY SILKS

Manchester is still usually a hand... From the rear of the loom, the... The great class of goods is dyed in... The dye is not dyed or printed... The dye is not dyed or printed... The dye is not dyed or printed...

Where the pattern is very complex... Each thread of the warp must pass... The threads of the warp are each... The threads of the warp are each... The threads of the warp are each...

How they are run over the large... The most striking difference be... The most striking difference be... The most striking difference be... The most striking difference be...

There had been a noticeable increase... Walker Shop Head Widely Experienced... Able Sales Force Distinguishes Specialty Store... In keeping with Manchester's 100 years of progress...



MANCHESTER HUDSON-ESSEX CO. G. L. BETTS, Mgr. 129 Spruce Street South Manchester, Conn. ESSEX MOTOR CARS

Stop At A Bond Hotel



HOTEL BOND ANNEX HOTEL OPENED SEPTEMBER 12, 1914



1924 HOTEL BOND HOTEL BOND PROPOSED ENLARGED GREATER HOTEL BOND



HOTEL BOND MORE OPENED APRIL 15, 1919.



GREATER HOTEL BOND OPENED SEPTEMBER 1, 1921

If you make one of the Bond Hotels your headquarters during the Manchester Centennial your stay will be both pleasant and comfortable. Hartford is only eleven miles from Manchester and you have every facility here for a satisfactory visit. Cordially yours, Harry Bond

"AN HOTEL IS KNOWN BY ITS HOSPITALITY"

The Manchester Lumber Co., Inc.

Headquarters for Frame and Finish Lumber, Sash-Doors, Blinds, Shingles, Lath, Tile, Lime, Cement, Plaster, Upson Board, Celotex, Plaster Boards, Coal

Service That Is Service

The Manchester Lumber Co., Inc.

So. Manchester, Conn. Phone 2011



EFFORT TO CREATE SEPARATE SOCIETY

Effort to create a separate society for the colored people of Hartford is being made by a group of individuals...

THE HARTFORD DAILY COURANT: SUNDAY, SEPTEMBER 30, 1923.

On May 21, 1923 the General Court in 124th session...

THE HARTFORD DAILY COURANT: SUNDAY, SEPTEMBER 30, 1923.

On May 21, 1923 the General Court in 124th session...

THE HARTFORD DAILY COURANT: SUNDAY, SEPTEMBER 30, 1923.

On May 21, 1923 the General Court in 124th session...

THE HARTFORD DAILY COURANT: SUNDAY, SEPTEMBER 30, 1923.

On May 21, 1923 the General Court in 124th session...

THE HARTFORD DAILY COURANT: SUNDAY, SEPTEMBER 30, 1923.

On May 21, 1923 the General Court in 124th session...

THE HARTFORD DAILY COURANT: SUNDAY, SEPTEMBER 30, 1923.

On May 21, 1923 the General Court in 124th session...

THE HARTFORD DAILY COURANT: SUNDAY, SEPTEMBER 30, 1923.

On May 21, 1923 the General Court in 124th session...

THE HARTFORD DAILY COURANT: SUNDAY, SEPTEMBER 30, 1923.

On May 21, 1923 the General Court in 124th session...

THE HARTFORD DAILY COURANT: SUNDAY, SEPTEMBER 30, 1923.

On May 21, 1923 the General Court in 124th session...

THE HARTFORD DAILY COURANT: SUNDAY, SEPTEMBER 30, 1923.

On May 21, 1923 the General Court in 124th session...

THE HARTFORD DAILY COURANT: SUNDAY, SEPTEMBER 30, 1923.

On May 21, 1923 the General Court in 124th session...

THE HARTFORD DAILY COURANT: SUNDAY, SEPTEMBER 30, 1923.

On May 21, 1923 the General Court in 124th session...

THE HARTFORD DAILY COURANT: SUNDAY, SEPTEMBER 30, 1923.

On May 21, 1923 the General Court in 124th session...

THE HARTFORD DAILY COURANT: SUNDAY, SEPTEMBER 30, 1923.

On May 21, 1923 the General Court in 124th session...

THE HARTFORD DAILY COURANT: SUNDAY, SEPTEMBER 30, 1923.

On May 21, 1923 the General Court in 124th session...

THE HARTFORD DAILY COURANT: SUNDAY, SEPTEMBER 30, 1923.

On May 21, 1923 the General Court in 124th session...

R. I. TEXTILE CO.

A Modern Textile Store With the Principle of VALUE GIVING

We Carry a Wide Assortment of Cotton Goods, Domestic, Hosiery, Notions, Blankets, Curtains and Draperies

SAMPLES ON REQUEST GROWING MAIL ORDERS PROMPTLY FILLED

Rhode Island Textile Co. 849 Main St. So. Manchester, Conn.

MEN'S CLOTHING AT PRICES YOU CAN AFFORD TO PAY

MEN'S FURNISHINGS Pressing and Cleaning of Clothes a Specialty. Our Service is the kind that always brings us new customers. Come to us if you need anything in our line.

J. LAUFER So. Manchester 695 MAIN ST.

Building Manchester's Wealth

Olds & Whipple, Inc., extends its cordial good wishes to the citizens of Manchester... Wealth From a Well Fertilized Field

Enriching and Nourishing the Soil for the Farmer

Olds & Whipple, Inc., was established forty-six years ago. Manchester was then fifty-four years old. Since this business was founded we have always had pleasant relations with Manchester folk...

166 State St. Hartford, Conn. INCORPORATED

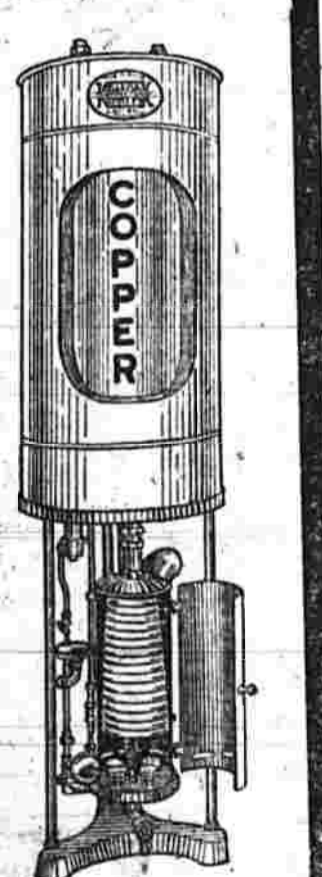
1823 - JUST THE WAY - 1923

Tallow Dips Wood Fires Carry Water No Plumbing Hot Water? Well Perhaps

Build a fire under a Cauldron then take a nap for four or five hours Some Service???

AFTER THE CELEBRATION WE WILL BE READY TO SERVE YOU

THE MANCHESTER GAS LIGHT CO.



IT WILL BE A PLEASURE WE KNOW Gas and Electric Lights House Heating Furnaces Water on Tap Sanitary Plumbing Hot Water? All You Want

In his own way... the survey of the town...

Men Who Had Large Part In Arranging Celebration... The celebration of the centennial...

REYNOLDS STONE'S WELL PATRONIZED... The celebration of the centennial...

TOWN'S RAILROAD FRANCHISE AMONG EARLIEST GRANTED... The town of East Hartford...

George H. Waddell Secretary General Committee... The celebration of the centennial...

Plumbing Supply Co. Increases Facilities... Blish and Associates Men of Long Experience...

ONE OF MANCHESTER'S LEADING BUSINESS MEN... The celebration of the centennial...

The Lynn Leather Co. OUTTERS OF MANTLE OAK SOLE IN TAPS AND STRIPS MANCHESTER, CONNECTICUT

Best Known Garage is Stephens Garage... The celebration of the centennial...

Turnpike Gas Station EARL J. CAMPBELL, Proprietor... The celebration of the centennial...

W. P. QUIRK HAS LONG BEEN IN BUSINESS... The celebration of the centennial...

READY for FALL... The celebration of the centennial...

100 Years Ago and TODAY on Manchester's Centennial... Southern New England Telephone Co. HARTFORD DISTRICT

Town's Railroad Franchise Among Earliest Granted... The town of East Hartford...

READY for FALL... The celebration of the centennial...

AHERN BROTHERS... The celebration of the centennial...

Park Hill Market... The celebration of the centennial...

Government Set Up in 1823... The celebration of the centennial...

READY for FALL... The celebration of the centennial...

P. J. HUTCHINSON... The celebration of the centennial...

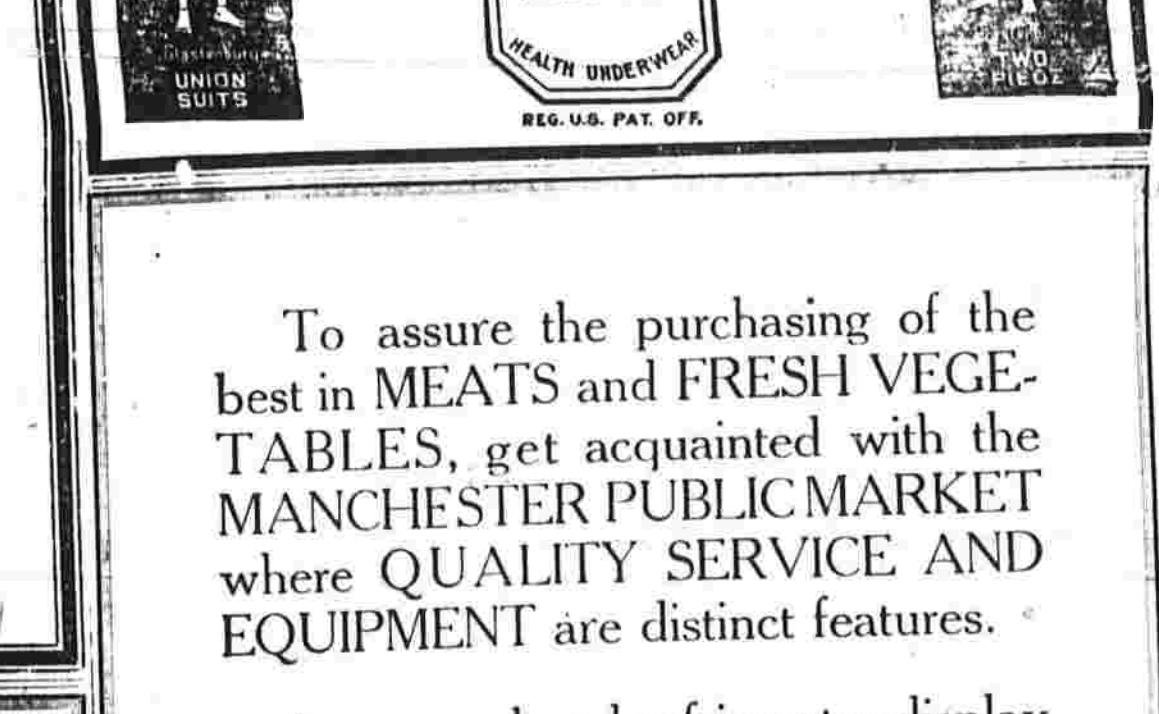
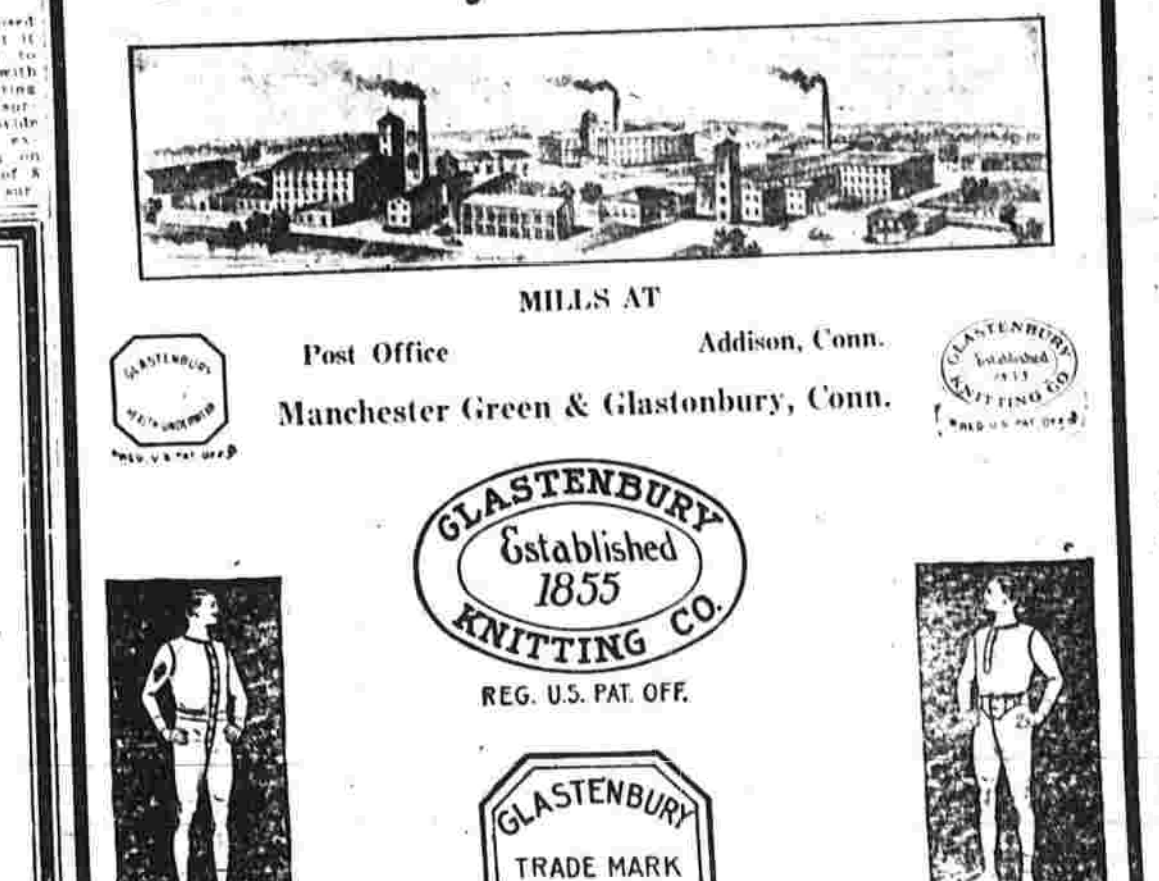
DODGE BROTHERS' CARS... The celebration of the centennial...

Improvement on what is now Main Street... The celebration of the centennial...

READY for FALL... The celebration of the centennial...

P. J. HUTCHINSON... The celebration of the centennial...

Manchester Public Market... The celebration of the centennial...



It was in the year 1816 that town clerk George Casey died. His estate was valued at \$10,000. The town of East Windsor, which had been an independent town since 1816, was then in the hands of the state. The town was then a part of the town of East Windsor, which had been an independent town since 1816. The town was then a part of the town of East Windsor, which had been an independent town since 1816.

At the meeting in 1816, the town of East Windsor was organized. The first meeting was held on the 30th of September. The town was then a part of the town of East Windsor, which had been an independent town since 1816. The town was then a part of the town of East Windsor, which had been an independent town since 1816.

The town of East Windsor was then a part of the town of East Windsor, which had been an independent town since 1816. The town was then a part of the town of East Windsor, which had been an independent town since 1816. The town was then a part of the town of East Windsor, which had been an independent town since 1816.

The town of East Windsor was then a part of the town of East Windsor, which had been an independent town since 1816. The town was then a part of the town of East Windsor, which had been an independent town since 1816. The town was then a part of the town of East Windsor, which had been an independent town since 1816.

The town of East Windsor was then a part of the town of East Windsor, which had been an independent town since 1816. The town was then a part of the town of East Windsor, which had been an independent town since 1816. The town was then a part of the town of East Windsor, which had been an independent town since 1816.

The town of East Windsor was then a part of the town of East Windsor, which had been an independent town since 1816. The town was then a part of the town of East Windsor, which had been an independent town since 1816. The town was then a part of the town of East Windsor, which had been an independent town since 1816.

The town of East Windsor was then a part of the town of East Windsor, which had been an independent town since 1816. The town was then a part of the town of East Windsor, which had been an independent town since 1816. The town was then a part of the town of East Windsor, which had been an independent town since 1816.

The town of East Windsor was then a part of the town of East Windsor, which had been an independent town since 1816. The town was then a part of the town of East Windsor, which had been an independent town since 1816. The town was then a part of the town of East Windsor, which had been an independent town since 1816.

The town of East Windsor was then a part of the town of East Windsor, which had been an independent town since 1816. The town was then a part of the town of East Windsor, which had been an independent town since 1816. The town was then a part of the town of East Windsor, which had been an independent town since 1816.

The town of East Windsor was then a part of the town of East Windsor, which had been an independent town since 1816. The town was then a part of the town of East Windsor, which had been an independent town since 1816. The town was then a part of the town of East Windsor, which had been an independent town since 1816.

The town of East Windsor was then a part of the town of East Windsor, which had been an independent town since 1816. The town was then a part of the town of East Windsor, which had been an independent town since 1816. The town was then a part of the town of East Windsor, which had been an independent town since 1816.

The town of East Windsor was then a part of the town of East Windsor, which had been an independent town since 1816. The town was then a part of the town of East Windsor, which had been an independent town since 1816. The town was then a part of the town of East Windsor, which had been an independent town since 1816.

The town of East Windsor was then a part of the town of East Windsor, which had been an independent town since 1816. The town was then a part of the town of East Windsor, which had been an independent town since 1816. The town was then a part of the town of East Windsor, which had been an independent town since 1816.

The town of East Windsor was then a part of the town of East Windsor, which had been an independent town since 1816. The town was then a part of the town of East Windsor, which had been an independent town since 1816. The town was then a part of the town of East Windsor, which had been an independent town since 1816.

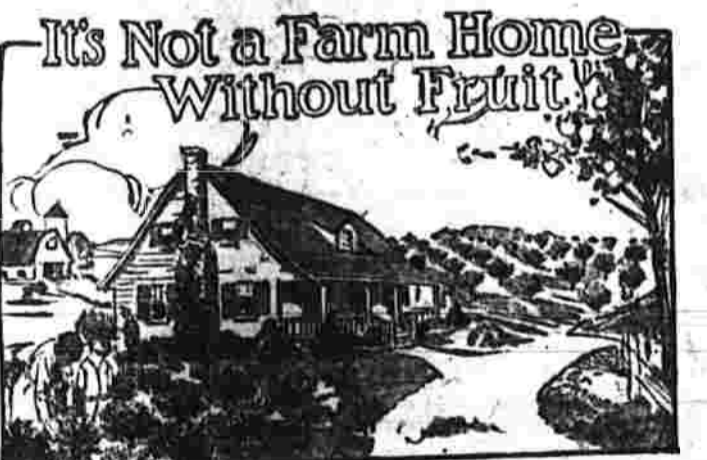
The town of East Windsor was then a part of the town of East Windsor, which had been an independent town since 1816. The town was then a part of the town of East Windsor, which had been an independent town since 1816. The town was then a part of the town of East Windsor, which had been an independent town since 1816.

The town of East Windsor was then a part of the town of East Windsor, which had been an independent town since 1816. The town was then a part of the town of East Windsor, which had been an independent town since 1816. The town was then a part of the town of East Windsor, which had been an independent town since 1816.

## MANCHESTER is the home of NEW ENGLAND'S LARGEST NURSERIES

GROWERS AND DISTRIBUTORS  
OF  
FRUIT AND ORNAMENTAL TREES, SMALL FRUITS, SHRUBS, ROSES,  
PERENNIALS, ETC.

600 ACRES  
UNDER CULTIVATION IN  
Manchester, Conn., Ellington, Conn.,  
Durham, Conn., Geneva, N. Y.,  
Angiers, France



500 SALES REPRESENTATIVES IN  
Connecticut  
Delaware  
Indiana  
Illinois  
Massachusetts  
Maine  
Maryland  
Michigan  
New Hampshire  
New Jersey  
New York  
Ohio  
Pennsylvania  
Rhode Island  
Vermont  
Virginia  
West Virginia  
Wisconsin

Whether you have a back yard or a hundred acres, our representative in your territory can show you what and how to PLANT FOR PROFIT and PLEASURE.  
A post card to the home office will bring the nearest "BURR" man to you.

## C. R. BURR & CO., Inc.

MANCHESTER, CONN.

We have some open territory for live representatives. Write our sales department for agency proposition.

PLAN to PLANT ANOTHER TREE

## NASH Durant & Star

Sales and Service Station

We are distributors for the Nash, Durant and Star cars and maintain the largest auto accessory house in Manchester. We also have a garage and service station at your disposal at any time.

## MADDEN BROS.

Distributors for NASH, DURANT and STAR  
Garage - Auto Accessories  
637 MAIN STREET MANCHESTER, CONN.  
OPEN EVENINGS

### Quality

Men who are particular about their shirts and other accessories look for the quality and then the price and style.



### Metter Shirt Shop

Hotel Sheridan Bldg. So. Manchester, Conn.

### MEMORIAL HOSPITAL

MODEL OF ITS KIND

MANCHESTER MEMORIAL HOSPITAL

Record of Service Shows its Worth

Further Improvements Contemplated to Care for Growth of Place

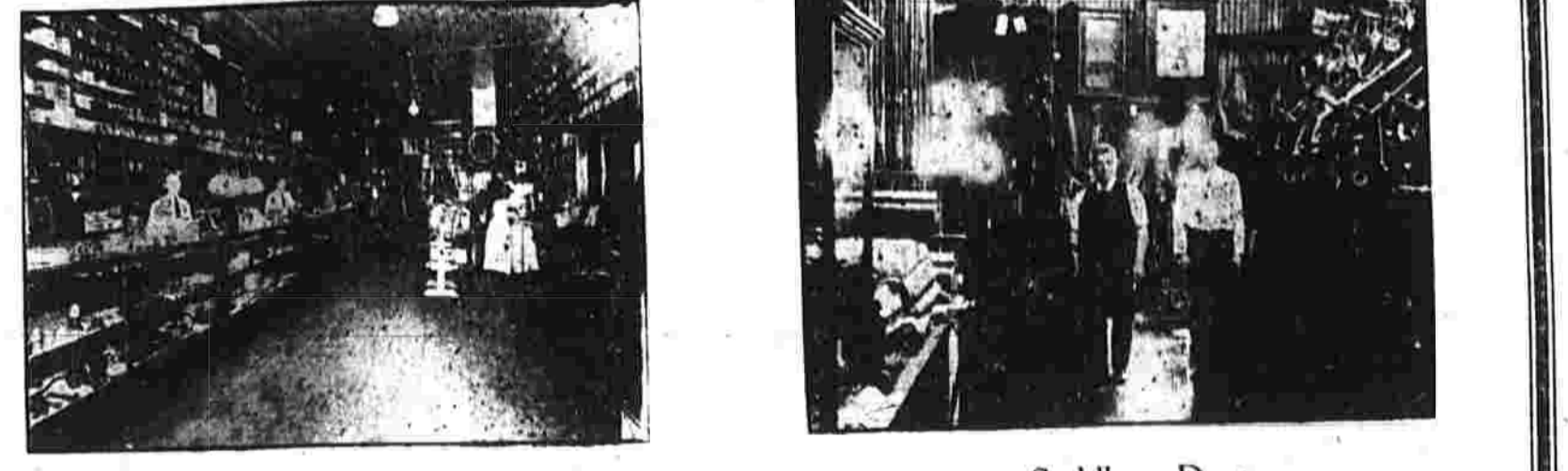
The Manchester Memorial Hospital stands as a substantial tribute to the service of those who went from the town in the World War and a monument to the beneficence of the citizens of Manchester. It was built and equipped by the town, and the record of service since its opening in 1919 has been most gratifying. The hospital was opened in December, 1919, and has since that time treated 2,221 patients, of whom 1,100 were discharged and 1,121 were still in the hospital. The hospital has a capacity of 20 beds and is equipped with the most modern apparatus for the care of patients. It is a commendable location and is well situated for the care of patients. The hospital is a credit to the town and its citizens. The building was designed for use by the town and is a credit to the town and its citizens. The hospital is a credit to the town and its citizens.

## THE F. T. BLISH HARDWARE CO.

825 Main Street South Manchester

THE HARDWARE STORE OF QUALITY AND SERVICE WHERE YOUR MONEY WILL PURCHASE QUALITY MERCHANDISE AT THE LOWEST CONSISTENT PRICE.

WE HAVE ALWAYS MAINTAINED THAT QUALITY IS REMEMBERED LONG AFTER PRICE IS FORGOTTEN. WITH THIS AIM IN VIEW WE HAVE BUILT UP A BUSINESS THAT HAS DOUBLED AND TREBLED IN THE LAST FEW YEARS, AND THE F. T. BLISH HARDWARE CO. IS KNOWN AND FAVORED WITH THE TRADE FOR MILES AROUND.



Main Floor Saddlery Dept.

### A Few of the Standard and Exclusive Lines Carried

P. & F. Corbin Hardware, McCormick Horse Mowers, Rakes and Tedders, Bateman & Co.'s Farm Machinery, John Deere Syracuse Plows, International Gasoline Engines, Unadilla Silos, Clark's Cutaway Harrows, Grass and Garden Seeds, Coldwell Lawn Mowers, Winchester Guns and Ammunition, Stanley Tools, Goodyear Tires, Jewett & Carter's White Lead, Devoe's Mixed Paints, American Field Fence, Reach Sporting Goods, Fertilizers—Made on own Formulas, Landers, Frary & Clark's Electrical Appliances, Empire Knife Co. Best Pocket Cutlery in the World, Shaft and Heavy Hardware.



Sample Display Room.

Everybody is invited to visit our store during Centennial Week—Special Values will be offered as an inducement to have you call on us—A Store and a stock we are proud of—We will leave it to you to judge.

## MANCHESTER'S FLORAL STORE

C. M. MILKOWSKI  
Proprietor  
829 MAIN STREET  
South Manchester, Connecticut

Florists of Distinction

Home of the New Edison  
The Phonograph with a Soul

May we have the pleasure of meeting you during Manchester's Centennial Celebration.

TOWN ORIGINALLY PART OF HARTFORD

Wadsworth, John H. Cheney and C. W. Cheney were appointed as the board of assessing plans for the year 1923. The board of assessors was organized on the 1st day of October...

MANCHESTER MARKET HAS FINE RECORD

Adam Pedrow, proprietor of the Manchester Market has had a fine record for the past year. The market has been successful in its business...

BOND HOTELS WILL ACCOMMODATE LARGE NUMBER OF VISITORS

With so many people coming to Manchester for the Centennial Week Program, the town is preparing to accommodate a large number of visitors...

COMBINED HOSTELRIES TO BE HEADQUARTERS FOR MANY

The three bond hotels, the Hotel Hamilton and the Hotel Sherman, are being combined to serve as headquarters for many of the visitors...

FITZGERALD BROS. QUALIFIED IN ALL TRUCKING BRANCHES

Fitzgerald Brothers, Inc. is qualified in all trucking branches. The company has a fleet of trucks and is ready to handle all business...

LATEST CHEVROLET MODELS RECEIVED BY W. R. TINKER, JR.

W. R. Tinker, Jr. has received the latest Chevrolet models. The cars are of the highest quality and are available for sale...

ALL SORTS OF RADIO EQUIPMENT IN STOCK AT BARSTOW'S STORE

Barstow's Store has a large stock of all sorts of radio equipment. The store is located at the corner of Main and Water streets...

HANDLES NEW WORK FOR WATER COMPANY

The Water Company has awarded a contract to handle new work. The work includes the installation of new pipes and fixtures...

MANCHESTER ONCE PART OF HARTFORD

Manchester was once part of Hartford. The town's history is closely tied to the city's development...

THE TOWN'S GROWTH AND DEVELOPMENT

The town's growth and development have been remarkable. The population has increased significantly over the years...

THE TOWN'S GROWTH AND DEVELOPMENT

The town's growth and development have been remarkable. The population has increased significantly over the years...

THE TOWN'S GROWTH AND DEVELOPMENT

The town's growth and development have been remarkable. The population has increased significantly over the years...

THE TOWN'S GROWTH AND DEVELOPMENT

The town's growth and development have been remarkable. The population has increased significantly over the years...

THE TOWN'S GROWTH AND DEVELOPMENT

The town's growth and development have been remarkable. The population has increased significantly over the years...

Advertisement for The Manchesters and Hartford and Manchester. It features a large illustration of a car and text promoting the 98 cars a day service. The text includes: 'We wish to congratulate Manchester on the observance of One Hundred Years and to Express Our Pleasure at the Privilege of TWENTY-EIGHT Years of Service in Establishing and Improving the Town's Transportation Facilities'.

Advertisement for White Foam Ammonia. It features an illustration of a person using the product and text describing its benefits. The text includes: 'When you want the Best Ammonia Ask for "WHITE FOAM" - the name is your guarantee of Satisfaction'.

# PUTNAM & CO.

Members of New York and Hartford Stock Exchanges

6 Central Row, Hartford, Conn.  
Telephone 2-1141 to 2-1146 Incl.

31 West Main St., New Britain, Conn.  
Telephone 2040

LET us extend our cordial wishes for a successful Centennial. Let us also extend an invitation to step into Putnam & Co.'s offices when you are in Hartford.

There are always times when an investor feels that he ought to have expert advice about his investments, what to buy and what to sell. Those are the times when Putnam & Co.'s service becomes invaluable.

There is much more to buying and selling securities than the mere transaction. Before you buy any stocks or bonds it is wise to have a complete analysis of the security, information regarding its yield, marketability, strength, etc. When you have these facts you cease to speculate with your money.

Putnam & Co. offers you the list of securities below with an assurance that you can buy from it with perfect confidence. Come in and talk with us.

## STOCKS

### INSURANCE STOCKS:

- 25 shs. Automobile Insurance Company
- 25 shs. Travelers Insurance Co.
- 25 shs. Aetna Life Insurance Co.
- 50 shs. Continental Insurance Co.
- 10 shs. Aetna (Fire) Insurance Co.
- 20 shs. Home Insurance Co.
- 25 shs. Niagara Fire Insurance Co.
- 5 shs. Springfield Fire & Marine Ins. Co.

### BANK STOCKS:

- 25 shs. First National Bank, Hartford
- 25 shs. Hartford-Conn. Trust Co.
- 40 shs. Bankers Trust Co.
- 50 shs. Chase National Bank
- 25 shs. National Bank of Commerce
- 50 shs. National Park Bank
- 50 shs. New York Trust Co.

### PUBLIC UTILITY STOCKS:

- 30 shs. Bristol & Plainville Electric Co.
- 50 shs. Connecticut Power Co. Com.
- 50 shs. Conn. Light & Power Co. 8% Pfd.
- 100 shs. Eastern Connecticut Power 7% 1st Pfd.
- 100 shs. Hartford Electric Light Co. Com.
- 90 shs. Idaho Power Co. 7% Pfd.
- 35 shs. Kansas Gas & Electric Co. 7% Pfd.
- 100 shs. Nebraska Power Co. 7% Pfd.
- 50 shs. New Britain Gas Co.
- 50 shs. Hartford City Gas Light Co. Com.
- 30 shs. Southern New England Tel. Co.

### MANUFACTURING STOCKS:

- 50 shs. American Hardware Corp.
- 50 shs. Automatic Refrigerating Co.
- 50 shs. A. C. Gilbert Co. 8% Pfd.
- 100 shs. Colt's Patent Fire Arms Mfg. Co.
- 100 shs. Fuller Brush 7% First Pfd.
- 25 shs. International Silver 7% Pfd.
- 100 shs. Landers, Frary & Clark
- 35 shs. Jewell Belting Co. 8% Pfd.
- 25 shs. J. R. Montgomery Co. Com.
- 30 shs. J. R. Montgomery Co. 8% Pfd.
- 50 shs. North & Judd Mfg. Co.
- 90 shs. Stanley Works Pfd.
- 50 shs. Stanley Works Com.
- 100 shs. Torrington Company
- 100 shs. Underwood Typewriter Co. Com.

## SERVICE

### To Our Clients

#### LOCAL SECURITIES

We endeavor to maintain a close market in all issues listed on the local exchange and also many other active and inactive Connecticut securities. We believe that it would be of advantage to anyone to consult us before buying or selling any of our local stocks or bonds.

#### OTHER MARKETS

Being members of the New York Stock Exchange and connected by private wires with New York, Boston, Chicago and all other important markets, we can give unexcelled service in the execution of orders everywhere. We buy, sell and quote all listed and unlisted securities. Our activities are varied and include departments for the handling of stocks, bonds, rights, fractional shares and Standard Oil securities.

#### NEW YORK BANK AND INSURANCE STOCKS

We maintain connections with Specialists in New York City for the purchase and sale of New York Bank and Insurance stocks for the purpose of giving our clients the best possible service. Your orders are solicited, or offerings will be made upon request.

#### STATISTICAL DEPARTMENT

Our files, showing past records, market quotations and financial condition of nearly every corporation in the United States, are open to all our clients wishing information on their investments.

#### FOREIGN EXCHANGE

We are prepared to furnish persons traveling abroad, or those desiring to make foreign remittances, drafts payable in all parts of the world. You are invited to inquire about our dollar drafts payable anywhere.

## BONDS

### TAX EXEMPT ISSUES:

- 100M City of Waterbury 4 $\frac{3}{8}$ s, Jan. 15, 1926-28
- 25M Dallas Joint Stock Land Bank 5s, Nov. 1952-32
- 50M Louisville Joint Stock Land Bank 5s, May 1953-33
- 50M Pacific Coast Joint Stock Land Bank 5s, Jan. 1953-33
- 50M Atlantic Joint Stock Land Bank 5s, Mar. 1953-33
- 50M First Carolina Joint Stock Land Bank 5s, July 1953-33

### PUBLIC UTILITIES AND INDUSTRIALS

- 20M Connecticut Light & Power 7s, May 1951
- 25M New England Tel. & Tel. 5s, June 1952
- 25M Edward G. Budd Mfg. Co. 6s, Feb. 1938
- 25M Eastern Connecticut Power Co. 5s, April 1948
- 25M New England Power Co. 5s, July 1951
- 50M American Glue Co. 5 $\frac{1}{8}$ s, Jan. 1929-38
- 25M Staten Island Edison Corp. 6 $\frac{1}{2}$ s, July 1953

### FOREIGN:

- 50M Republic of Cuba 5 $\frac{1}{8}$ s, January 15, 1953
- 20M Govt. of Switzerland 5s, August 1926
- 25M Prov. of Ont. 4s, March 1926
- 25M Prov. of Ont. 5s, April 1952
- 25M Prov. of Alberta 5 $\frac{1}{8}$ s, Jan. 1947
- 25M Prov. of Saskatchewan 5s, June 15, 1943
- 25M Prov. of British Columbia 6s, March 1926
- 25M Dom. of Canada 5s, May 1952